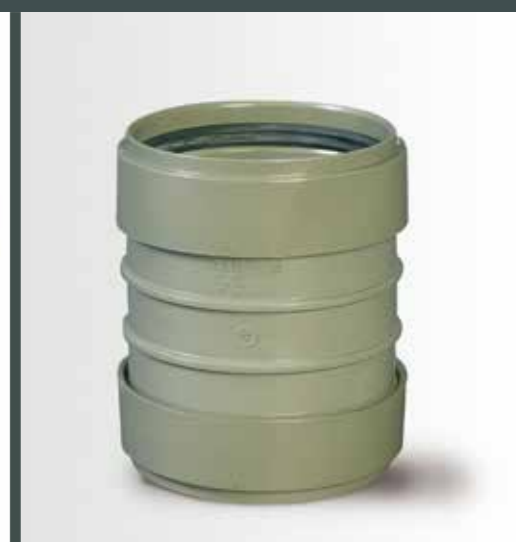




38/1000/SEP 2014/SCG



TERRAIN SDP



NUEVA TERRAIN S.L.

Pol. Ind. Jundiz
C/ Paduleta nº 2
01015 VITORIA - ÁLAVA (ESPAÑA)
Tel. 945 14 11 88 - Fax 945 14 33 36
E-mail: nuevaterrain@nuevaterrain.com
<http://www.nuevaterrain.com>

**PVC-U DRAINPIPES, PARTS
AND COMPONENTS**

Soundproof System

Excellent system to absorb and decrease all noises derived from the drainage installation within the building.

The system is certified with excellent results, accordingly to EN 1466 certification, at Fraunhofer Institute in Stuttgart.

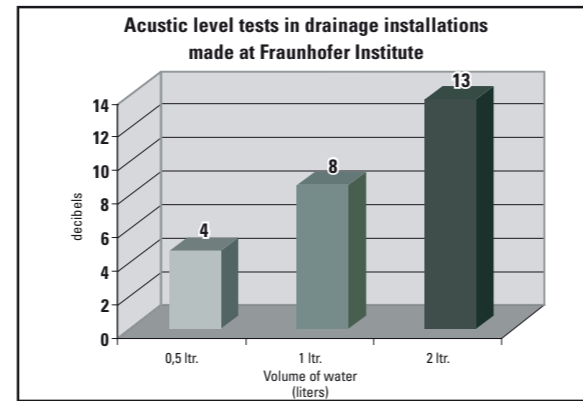
It resists high temperatures in discontinuous use.

It resists a degree of impact (**all fittings from the system are High Impact Resistance**)

In our system, pipes are male and fittings female trying to reduce at maximum sockets needed which make the installation expensive.

Complete system from 50 to 160 mm

We give solution to all types of installations, secondary ventilation, access door, ventilation valve, etc... making it compatible with our PVC-U soundproof system.



The test has been made according to different drainage water levels (0.5, 1 and 2 liters per second), being these ones considered as the most common levels within the installation. These data correspond to the acoustic pressure measurements, in decibels, originated by the mentioned water levels at the reception room, **basement floor after the wall** with a resistance of 220 kg/m² according to EN-14366:2005-02.

INSTALLATION

In order to obtain 100% of efficiency in noise reduction, Nueva Terrain recommends bearing in mind the flowing points:

- 1.- All changes in the direction of the installation should be made in 45°.
- 2.- All **passby** from the WC to the main line is done at 45°.
- 3.- All joints are made with rubber ring.
- 4.- All clips used in the installation must be isofonique (with rubber ring).



REACTION TO FIRE

Nueva Terrain SDP Soundproof Sewerage systems have also been developed in compliance with article 11 of the Building Code, on Basic Safety Requirements in the case of fire", pursuant to the following premises:

1. That it is important to ascertain whether or not a material will contribute directly to the spread of a fire.
2. That the results of non-combustibility tests provide the information required, that they allow decision-makers to determine if the material in question is suitable for use in the building.
3. That consumers are entitled to be protected from risks that affect their safety.



| Classes for reaction to fire | B | C | D | E | F |
|--|--|---|--|---|-----------------------------------|
| | Low speed of fire spread and heat emission | Medium speed of fire spread and heat emission | High speed of fire spread and heat emission | Very high speed of fire spread and heat emission | Without determined characteristic |
| SMOKE opacity classification (S) | S ₁ Low quantity and speed of emission | | S ₂ Average quantity and speed of emission | S ₃ High quantity or speed of emission | |
| Molten drip or flaming particle classification (d) | d ₀ No flaming drips are produced | | d ₁ There are no molten drip particles with duration in excess of 10 seconds | d ₂ High molten drip or particle classification | |

Based on the above premises, the final results of the fire resistance tests performed on our sewerage systems conducted at the AFITI-Licof laboratory in accordance with EN 13501-1:2002, are:

- **PVC-U Terrain SDP sewerage system (grey-green colour): B-S₁,d₀**

Piping

Manufactured in accordance with UNE-EN 1329-1:2001 standard, capable of withstanding intermittent discharges of water at 95° (test file No. 12656 of the Eduardo Torroja institute)

APPLICATION B - PVC-U SEWAGE PIPE



| REFERENCE | Ø | REFERENCE | Ø |
|-----------------|--------|-------------|----------|
| 100.083.058 | (2) 83 | 100.110.030 | 110 |
| 100.110.030 | 110 | 100.110.058 | 110 |
| 200.040.030 | 40 | 100.125.030 | 125 |
| 200.040.058 | 40 | 100.125.058 | 125 |
| 200.040.058.010 | (1) 40 | 100.160.030 | 160 |
| 200.050.030 | 50 | 100.160.058 | 160 |
| 200.050.058 | 50 | 100.200.058 | *(3) 200 |
| 100.083.030 | (2) 83 | 100.250.058 | *(3) 250 |

M-F ELBOW



| REFERENCE | Ø |
|-----------------------|-----|
| 207.040.135 + 209.040 | 40 |
| 207.050.135 + 209.050 | 50 |
| 107.110.135 + 109.110 | 110 |

DOUBLE BRANCH



| REFERENCE | Ø |
|---|---------|
| 206.040.135 + (4)209.040 | 40 |
| 206.050.135 + (4)209.050 | 50 |
| 106.110.135 + (4)109.110 | 110 |
| 1.106.125.135 | 125 |
| 106.160.110.135 + (2)109.110 + (2)109.160 | 160x110 |

BOSS CONNECTOR COUPLER



| REFERENCE | Ø |
|---|-----------|
| 116.110.050.040+(2)109.110+209.050+(3)209.040 | 110x50x40 |

STRAIGHT COUPLER



| REFERENCE | Ø |
|----------------------|-----|
| 210.040 + (2)209.040 | 40 |
| 210.050 + (2)209.050 | 50 |
| 110.110 + (2)109.110 | 110 |
| 1.110.125 | 125 |
| 110.160 + (2)109.160 | 160 |
| 1.811.200 | 200 |
| 6.110.250 | 250 |

SLIP COUPLER



| REFERENCE | Ø |
|-----------|-----|
| 211.040 | 40 |
| 211.050 | 50 |
| 1.111.110 | 110 |
| 1.111.125 | 125 |
| 111.160 | 160 |
| 1.816.200 | 200 |

ADAPTING RINGS



| REFERENCE | Ø |
|-----------|-----|
| 209.40 | 40 |
| 209.50 | 50 |
| 109.110 | 110 |
| 109.160 | 160 |

ISOPHONIC CLAMP

FOR THREADED ROD M-8 PVC-U SEWAGE PIPE



| REFERENCE | Ø |
|-------------|-----|
| 643.050.008 | 50 |
| 643.110.008 | 110 |
| 643.115.008 | 115 |
| 643.125.008 | 125 |
| 643.160.008 | 160 |

PVC-U Components for drains

F-F ELBOW



| REFERENCE | Ø |
|--------------------------|-----|
| 201.040.135 + (2)209.040 | 40 |
| 201.050.135 + (2)209.050 | 50 |
| 101.110.135 + (2)109.110 | 110 |
| 1.101.125.135 | 125 |
| 101.160.135 + (2)109.160 | 160 |
| 6.101.200.135 | 200 |
| 6.101.250.135 | 250 |

SINGLE BRANCH



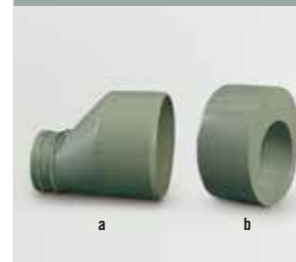
| REFERENCE | Ø |
|--------------------------------------|---------|
| 204.040.135 + (3)209.040 | 40 |
| 204.050.135 + (3)209.050 | 50 |
| 104.110.135 + (3)109.110 | 110 |
| 1.104.125.135 | 125 |
| 104.160.110.135 + (2)109.160+109x110 | 160x110 |
| 104.160.135 + (3)109.110 | 160 |
| 6.104.200.110.135 + 109.110 | 200x110 |
| 6.104.200.125.135 | 200x125 |
| 6.104.200.135 | 200 |

CROSS-VENTILATION CONNECTOR



| REFERENCE | Ø |
|---------------------------------|--------|
| 108.110.050 + 109.110 + 209.050 | 110x50 |

REDUCERS



| REFERENCE | Ø |
|---------------------------|---------|
| 124.110.050 (b) | 110x50 |
| 124.125.110 (b) | 125x110 |
| 124.160.110 (b) | 160x110 |
| 124.160.125 (b) | 160x125 |
| 124.200.110 + 109.110 (a) | 200x110 |
| 1.124.200.125 (a) | 200x125 |
| 124.200.160 + 109.160 (a) | 200x160 |
| 123.200.110 (c) | 200x110 |
| 123.200.160 (c) | 200x160 |

45° BOSS CONNECTOR



| REFERENCE | Ø |
|-----------------|----|
| 112.110.040.135 | 40 |
| 112.110.050.135 | 50 |

FIREWALL COLLAR



| REFERENCE | Ø |
|-----------|-----|
| 670.40 | 40 |
| 670.55 | 55 |
| 670.110 | 110 |
| 670.125 | 125 |
| 670.160 | 160 |
| 670.200 | 200 |