



# ***SDP***

**PVC-U PARTS AND  
ACCESSORIES**



***NUEVA TERRAIN S.L.***



## INDEX

4	Some of our exclusive parts
6	Pipes
10	PVC-U Fittings for drains
19	White Series
22	Ventilation Series
24	Rainwater Series
27	Waste traps, Bottle traps and Outlets
35	Fittings, Tools and Spares
37	Terrain SDP System
40	Certificates
43	General conditions

**NUEVA TERRAIN**, Spain's market leader in PVC-U and Polyethylene (PB) parts and accessories, is pleased to present its general PVC-U catalogue, to facilitate the work of professional in this sector, by providing them with complete, detailed and precise information.

**NUEVA TERRAIN** would like to take this opportunity to thank all those who have shown their confidence in us by using our products, and to reiterate our wish to continue offering top quality, high performance products.



**Pipes, PVC-U Fittings  
and accessories**



**Some of our  
exclusive parts**



## 45° BOSS CONNECTORS

Boss connectors specially designed to comply with the requirements of the Technical Code of the Building. Connect the small discharge directly to assembled soil pipes at an angle of 45 degrees.



## 90° BOSS CONNECTORS

These grafts allow to connect the small evacuation to a pipeline - collector of a simple and trustworthy way, supporting a slope of 2.2 % to assure the flow.



## SPECIAL BOSS CONNECTOR FOR ASSEMBLED SOIL PIPES

These boss connectors have similar characteristics to those above, and are specially designed for connection to assembled soil pipes.



## ACCESS DOORS

This access door is designed with special characteristics. It has the advantage that it can be coupled from the outside without the inner part coming off with the pipe. It may be fitted during installation work or whenever an obstruction occurs.



## ELBOW WITH ACCESS DOOR

This exclusive NUEVA TERRAIN elbow is fitted with an access door providing access to the interior of installations in two directions. Moreover, if it is fitted as a branch in a soil pipes, the configuration of the access door gives extra protection against the possibility of impact from falling objects.



## CROSS-VENT CONNECTOR

This special fittings is part of the secondary ventilation diameter 50 and 63 for connection to assembled soil pipes diameter 110 mm. According to some Technical Building Codes it is necessary to have secondary ventilation in buildings with 7 or more plants.

The design reduces the space between the assembled soil pipes and ventilation, optimizes air flow, facilitates the assembly and improves the reliability of the set.

## PRE - FAB FITTING

Nueva Terrain has a department of manufacture of fittings manipulated of evacuation that goes attending to the special needs of the market over 40 years in the sector in the sector. Along with the vast catalog available of injected fittings, Nueva Terrain additionally offers individualized professional solutions to solve the different situations in work demand and whose production on the part of our service of prefabricated includes from the primary analysis of the need (planes, sketch..), to advice on solving the problem and concludes with the design and manufacture of the fitting.

These fittings, which are supplied on request, are elaborated by qualified personnel in a plant of specific production and are a fruit of the constant communication of our extensive commercial network with the market and his needs throughout the years.





**Pipes**

\* Useful length for diameters 200mm = 5.655m,  
250mm = 5.610m, 315mm = 5.570 m

- (1) White sanitary colour
- (2) Out of norm
- (3) Male- Female



## PVC-U PIPE FOR SEWAGE WATER- APPLICATION B

REFERENCE	EXTERIOR DIAMETER mm.	COLOUR	E	PIPE WEIGHT Kgrs.	PIPE LENGTH m.
200.032.030	32	Grey	3,0	1,23	3,00
200.032.058	32	Grey	3,0	2,38	5,80
200.032.058.010	(1) 32	White	3,0	2,38	5,80
200.040.030	40	Grey	3,0	1,57	3,00
200.040.058	40	Grey	3,0	3,04	5,80
200.040.058.010	(1) 40	White	3,0	3,04	5,80
200.050.030	50	Grey	3,0	2,00	3,00
200.050.058	50	Grey	3,0	3,86	5,80
200.050.058.010	(1) 50	White	3,0	3,86	5,80
100.083.030	(2) 83	Grey	3,2	3,60	3,00
100.083.058	(2) 83	Grey	3,2	6,96	5,80
100.110.030	110	Grey	3,2	4,93	3,00
100.110.058	110	Grey	3,2	9,53	5,80
100.125.030	125	Grey	3,2	5,54	3,00
100.125.058	125	Grey	3,2	10,70	5,80
100.160.030	160	Grey	3,2	7,24	3,00
100.160.058	*(3) 160	Grey	3,2	14,00	5,80
100.200.058	*(3) 200	Grey	3,9	21,25	5,80
100.250.058	*(3) 250	Grey	4,9	33,28	5,80
100.315.058	*(3) 315	Grey	6,2	52,63	5,80

Produced according to UNE-EN 1.329-1 norm, resisting intermittent water discharges at 95°C (test within file N° 12656 from Institute Eduardo Torroja)



## PVC-U PIPE FOR DRAINAGE USE

Produced according to thicknesses requested in the norm UNE-EN 1.401-1, for the application or not in UD underground piping and used for drainage and evacuation. This series can be used for purposes of application B.

### GLUED JOINT

REFERENCE	EXTERIOR DIAMETER mm.	COLOUR	E	PIPE WEIGHT Kgrs.	PIPE LENGTH m.
100.110.030	110	Grey	3,2	4,928	3,00
100.110.058	110	Grey	3,2	9,527	5,80
100.125.030	125	Grey	3,2	5,536	3,00
100.125.058	125	Grey	3,2	10,703	5,80
600.160.058	160	Grey	4,0	17,332	5,80
600.200.058	(3) 200	Grey	4,9	26,580	5,80
600.250.058	(3) 250	Grey	6,2	41,971	5,80
600.315.058	(3) 315	Grey	7,7	65,791	5,80
600.400.058	(3) 400	Grey	9,8	106,238	5,80



### ELASTIC SEAL JOINT

REFERENCE	EXTERIOR DIAMETER mm.	COLOUR	E	PIPE WEIGHT Kgrs.	PIPE LENGTH m.
600.125.058.001	(3) 125	Orange (RAL 2010)	3,2	10,703	5,80
600.160.058.001	(3) 160	Orange (RAL 2010)	4,0	16,919	5,80
600.200.058.001	(3) 200	Orange (RAL 2010)	4,9	26,580	5,80
600.250.058.001	(3) 250	Orange (RAL 2010)	6,2	41,971	5,80
600.315.058.001	(3) 315	Orange (RAL 2010)	7,7	65,791	5,80
600.400.058.001	(3) 400	Orange (RAL 2010)	9,8	106,238	5,80

- (1) Diameter out of norm
- (2) White sanitary colour



## PVC-U RAINWATER PIPES

REFERENCE	EXTERIOR DIAMETER mm.	COLOUR RAL 7003	E	PIPE WEIGHT Kgrs.	PIPE LENGTH m.
800.050.058	50	Grey	1,5	2,482	5,8
800.063.058	63	Grey	1,5	2,691	5,8
800.083.030	(1) 83	Grey	1,8	2,154	3,0
800.083.050	(1) 83	Grey	1,8	3,589	5,0
800.110.030	110	Grey	2,2	3,468	3,0
800.110.030.010	(2) 110	White	2,2	3,468	3,0
800.110.050	110	Grey	2,2	5,779	5,0
800.110.050.010	(2) 110	White	2,2	5,779	5,0
800.125.030	125	Grey	2,5	4,471	3,0
800.125.050	125	Grey	2,5	7,452	5,0

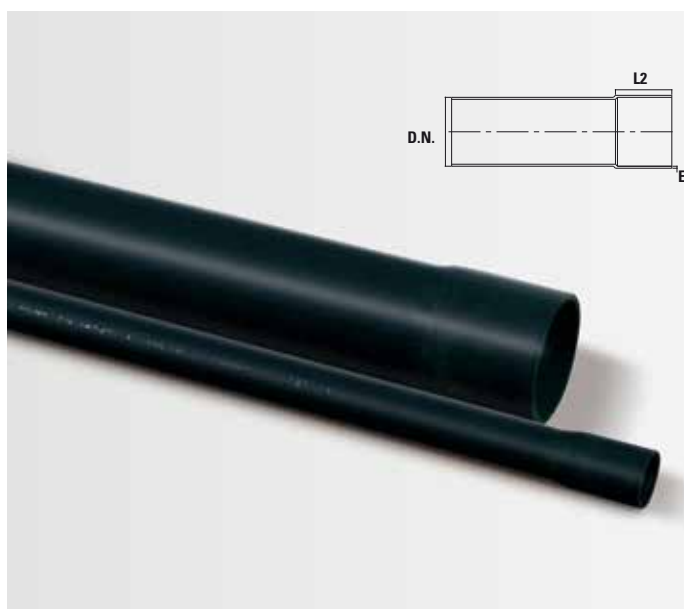
Produced according to norm UNE-EN 12.200-1  
For raining water and tank discharges, useful for ventilation



## NON-STANDARD PVC-U PIPES FORM VENTILATION OF COMMERCIAL PREMISES, WALL THROUGH-PIPES, LOST FRAMEWORK...

REFERENCE	EXTERIOR DIAMETER mm.	COLOUR RAL 7003OR	E	PIPE WEIGHT Kgrs.	PIPE LENGTH m.
400.083.030	83	Grey	1,2	1,407	3,0
400.083.058	83	Grey	1,2	2,718	5,8
400.110.030	110	Grey	1,4	2,180	3,0
400.110.058	110	Grey	1,4	4,214	5,8
400.125.030	125	Grey	1,6	2,831	3,0
400.125.058	125	Grey	1,6	5,472	5,8
400.160.030	160	Grey	2,0	4,530	3,0
400.160.058	160	Grey	2,0	8,757	5,8
400.200.058	200	Grey	2,5	13,683	5,8

Pipes are supplied with one end to be glued



## PVC-U PIPES FOR PREASURE

REFERENCE	EXTERIOR DIAMETER mm.	COLOUR RAL 7003LOR	E	PIPE WEIGHT Kgrs.	PIPE LENGTH m.
500.075.004.058	75	Grey (RAL 7011)	1,8	3,775	5,8
500.090.004.058	90	Grey (RAL 7011)	1,8	4,551	5,8
500.110.004.058	110	Grey (RAL 7011)	2,2	6,704	5,8
500.125.004.058	125	Grey (RAL 7011)	2,5	8,644	5,8
500.140.004.058	140	Grey (RAL 7011)	2,8	10,820	5,8
500.160.004.058	160	Grey (RAL 7011)	3,2	13,996	5,8
500.180.004.058	180	Grey (RAL 7011)	3,6	17,642	5,8
500.200.004.058	200	Grey (RAL 7011)	4,0	21,758	5,8
500.250.004.058	250	Grey (RAL 7011)	4,9	33,274	5,8
500.315.004.058	315	Grey (RAL 7011)	6,2	52,631	5,8
500.400.004.058	400	Grey (RAL 7011)	7,9	85,268	5,8





## PVC-U PIPES FOR USE UNDER PRESSURE COLOUR RAL 7011

Pipes referred in this chapter fulfil requirements from UNE-EN 1452.

- Pipes are supplied with one end to be glued
- Total length of the pipes is 5.8 m
- For other diameters, length or higher pressure rates, please contact us for characteristics and prices.

6 bar				
REFERENCE	EXTERIOR DIAMETER mm.	L 2	THICKNESS mm.	PIPE WEIGHT Kgrs.
500.040.006.058	40	46	1,50	1,964
500.050.006.058	50	56	1,50	2,482
500.063.006.058	63	65	1,90	3,305
500.075.006.058	75	77	2,20	4,505
500.090.006.058	90	80	2,70	6,586

7,5 bar				
500.110.006.058	110	90	3,20	9,527
500.125.006.058	125	100	3,70	12,467
500.140.006.058	140	110	4,10	15,407
500.160.006.058	160	125	4,70	20,170
500.180.006.058	180	135	5,30	25,580
500.200.006.058	200	145	5,90	31,579
500.250.006.058	250	190	7,30	48,691
500.315.006.058	315	230	9,20	74,713
500.400.006.058	400	270	11,70	124,080

10 bar				
500.040.010.058	40	46	1,90	2,152
500.050.010.058	50	56	2,40	3,217
500.063.010.058	63	65	3,00	5,022
500.075.010.058	75	77	3,60	7,115
500.090.010.058	90	80	4,30	10,232

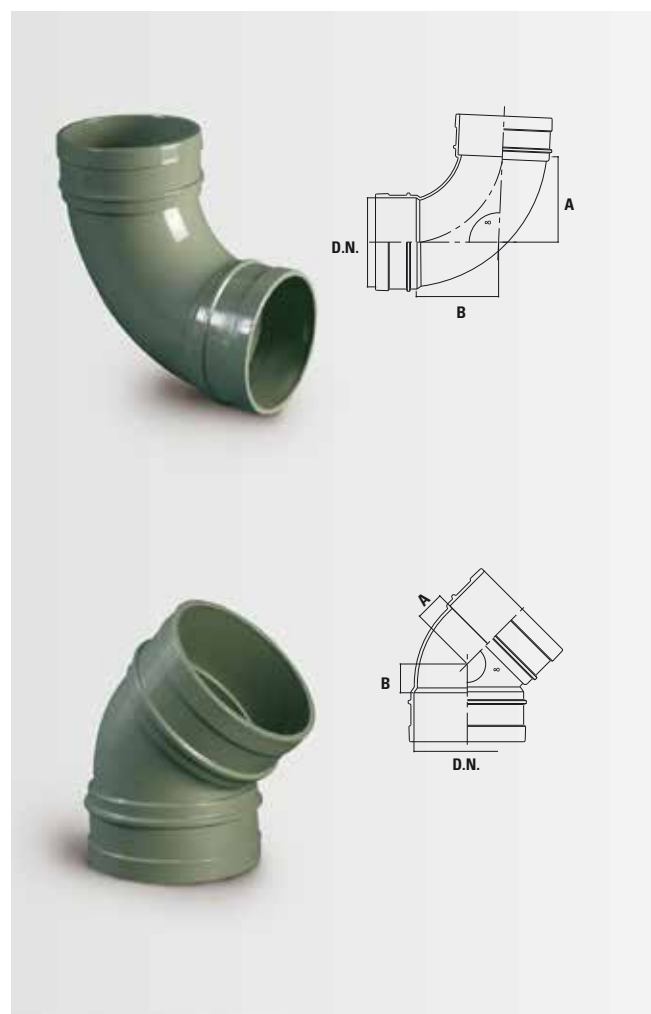
12,5 bar				
500.025.010.058	25	31	1,50	1,011
500.032.010.058	32	35	1,90	1,552
500.110.010.058	110	90	5,30	15,289
500.125.010.058	125	100	6,00	19,641
500.140.010.058	140	110	6,70	24,463
500.160.010.058	160	125	7,70	32,108
500.180.010.058	180	135	8,60	40,341
500.200.010.058	200	145	9,60	49,926

16 bar				
500.020.016.058	20	31	1,50	0,794
500.025.016.058	25	31	1,90	1,247
500.032.016.058	32	35	2,40	1,994
500.040.016.058	40	46	3,00	3,087
500.050.016.058	50	56	3,70	4,734
500.063.016.058	63	65	4,70	7,527
500.075.016.058	75	77	5,60	10,644
500.090.016.058	90	80	6,70	15,289

20 bar				
500.110.016.058	110	90	8,10	22,717



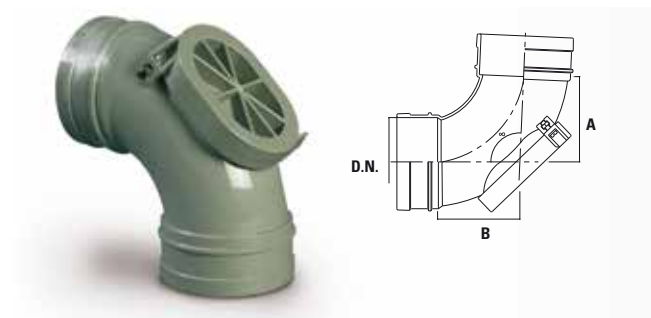
**PVC-U parts for drains**



## ELBOWS

REFERENCE	DIAMETER mm.	COLOUR	WEIGHT	TYPE OF UNION	ANGLE $\alpha$	A	B
201.032.092 ☒	32	Grey	48,9	H-H	92°	25,0	25,0
201.032.135 ☒	32	Grey	45,8	H-H	135°	15,0	15,0
201.032.092.010	32	White	49,0	H-H	92°	25,0	21,0
201.032.135.010	32	White	45,2	H-H	135°	15,0	15,0
201.040.092 ☒	40	Grey	74,6	H-H	92°	39,0	39,0
201.040.135 ☒	40	Grey	54,6	H-H	135°	11,0	11,0
201.040.092.010	40	White	75,6	H-H	92°	39,0	39,0
201.040.135.010	40	White	55,8	H-H	135°	11,0	11,0
201.050.092 ☒	50	Grey	110,1	H-H	92°	41,5	41,5
201.050.092.010	50	White	110,1	H-H	92°	41,5	41,5
201.050.135	50	Grey	86,9	H-H	135°	17,0	17,0
201.063.092	63	Grey	140,0	H-H	92°	39,0	39,0
201.063.135	63	Grey	110,0	H-H	135°	16,0	16,0
<b>101.083.092 •</b>	<b>83</b>	<b>Grey</b>	<b>359,6</b>	<b>H-H</b>	<b>92°</b>	<b>94,0</b>	<b>94,0</b>
101.083.135	83	Grey	236,9	H-H	135°	25,5	25,5
<b>101.110.092 •</b>	<b>110</b>	<b>Grey</b>	<b>532,0</b>	<b>H-H</b>	<b>92°</b>	<b>107,0</b>	<b>100,0</b>
101.110.092.010	110	White	520,0	H-H	92°	107,0	100,0
101.110.135 ☒	110	Grey	353,8	H-H	135°	30,0	30,0
101.110.135.010	110	White	353,8	H-H	135°	30,0	30,0
1.101.110.135	110	Grey	465,0	H-H	135°	24,0	24,0
<b>1.101.125.092 •</b>	<b>* 125</b>	<b>Grey</b>	<b>919,2</b>	<b>H-H</b>	<b>92°</b>	<b>146,0</b>	<b>149,0</b>
1.101.125.135	* 125	Grey	585,9	H-H	135°	40,0	40,0
<b>101.160.092 •</b>	<b>160</b>	<b>Grey</b>	<b>1405,0</b>	<b>H-H</b>	<b>92°</b>	<b>187,5</b>	<b>193,0</b>
101.160.135	160	Grey	827,8	H-H	135°	44,5	44,5
<b>6.101.200.092 •</b>	<b>* 200</b>	<b>Grey</b>	<b>2510,0</b>	<b>M-H</b>	<b>92°</b>	<b>190,0</b>	<b>204,0</b>
6.101.200.135	* 200	Grey	1581,0	M-H	135°	58,0	60,0
<b>6.101.250.092 •</b>	<b>* 250</b>	<b>Grey</b>	<b>4055,0</b>	<b>M-H</b>	<b>92°</b>	<b>146,0</b>	<b>148,0</b>
<b>6.101.250.135 •</b>	<b>* 250</b>	<b>Grey</b>	<b>3185,0</b>	<b>M-H</b>	<b>135°</b>	<b>79,0</b>	<b>71,0</b>

• High Impact Elbow



## ELBOW WITH ACCESS DOOR

REFERENCE	DIAMETER mm.	COLOUR	WEIGHT	TYPE OF UNION	ANGLE $\alpha$ °	A	B
103.110.092	110	Grey	714,2	H-H	92°	104,5	92,5



## M-F ELBOW

REFERENCE	DIAMETER mm.	COLOUR	WEIGHT	TYPE OF UNION	ANGLE $\alpha$ °	A	B
207.040.092	40	Grey	63,0	M-H	92°	27,5	27,0
207.040.135	40	Grey	48,0	M-H	135°	36,0	14,0
207.050.092	50	Grey	-	M-H	92°	42,0	35,0
207.050.135	50	Grey	68,0	M-H	135°	42,0	16,0
107.083.092	83	Grey	300,0	M-H	92°	105,0	41,0
107.110.092	110	Grey	527,6	M-H	92°	141,0	56,0
107.110.135	110	Grey	286,0	M-H	135°	54,0	30,6
107.110.135.010	110	White	286,0	M-H	135°	54,0	30,6
1.107.110.135	110	Grey	410,0	M-H	135°	78,0	24,0
107.110.158 ☒	110	Grey	244,9	M-H	158°	52,5	13,6
1.107.125.158	* 125	Grey	426,8	M-H	158°	78,0	14,0
107.160.158	160	Grey	561,0	M-H	158°	78,0	18,0

☐ Accessories certified by AENOR.

\* These fittings include rubber ring. All mouths of series 100 and 200 can be jointed through rubber ring tough the adapting ring.

## SINGLE BRANCH

REFERENCE	DIAMETER mm.	COLOUR	WEIGHT	TYPE OF UNION	ANGLE $\alpha$	A	B	C
204.032.135 ☐	32	Grey	79,0	H-H	135°	44,5	44,5	11,5
204.032.040.135	32x40	Grey	88,0	H-H	135°	44,5	44,5	7,5
204.032.135.010	32	White	79,0	H-H	135°	44,5	44,5	11,5
204.040.092 ☐	40	Grey	99,3	H-H	92°	35,0	20,0	35,0
204.040.135 ☐	40	Grey	114,9	H-H	135°	53,0	53,0	14,0
204.040.092.010	40	White	99,5	H-H	92°	35,0	20,0	35,0
204.040.135.010	40	White	116,0	H-H	135°	53,0	53,0	14,0
204.050.092 ☐	50	Grey	153,7	H-H	92°	41,5	26,0	44,0
204.050.092.010	50	White	153,7	H-H	92°	41,5	26,0	44,0
204.060.135 ☐	50	Grey	168,5	H-H	135°	65,0	62,0	17,0
204.063.092	63	Grey	-	H-H	92°	39,0	35,7	39,0
204.063.135	63	Grey	250,0	H-H	135°	84,0	84,0	14,0
104.083.092	83	Grey	495,0	H-H	92°	88,0	35,0	70,0
104.083.135	83	Grey	474,0	H-H	135°	108,0	101,5	19,0
104.110.092	110	Grey	708,8	H-H	92°	101,5	45,0	104,0
104.110.092.010	110	White	708,8	H-H	92°	101,5	45,0	104,0
104.110.135 ☐	110	Grey	784,0	H-H	135°	136,5	136,5	26,0
104.110.135.010	110	White	784,0	H-H	135°	136,5	136,5	26,0
1.104.110.135	110	Grey	935,0	H-H	92°	139,0	139,0	34,0
1.104.125.110.092	* 125x110	Grey	1003,1	H-H	92°	112,5	58,0	101,0
1.104.125.092	* 125	Grey	1287,2	H-H	92°	138,0	57,0	129,0
1.104.125.135	* 125	Grey	1214,5	H-H	135°	162,0	162,0	45,0
104.160.110.092	160x110	Grey	1019,2	H-H	92°	89,0	61,0	60,0
104.160.110.135	160x110	Grey	1260,0	H-H	135°	173,0	96,5	163,5
104.160.092	160	Grey	1324,0	H-H	92°	94,0	94,0	89,0
104.160.135	160	Grey	1756,0	H-H	135°	201,0	201,0	36,0
6.104.200.110.135	* 200x110	Grey	2365,0	M-H	135°	204,0	259,0	70,5
6.104.200.125.135	* 200x125	Grey	2436,0	M-H	135°	218,0	259,0	70,5
<b>6.104.200.092 •</b>	<b>* 200</b>	<b>Grey</b>	<b>2830,0</b>	<b>M-H</b>	<b>92°</b>	<b>117,0</b>	<b>117,0</b>	<b>115,0</b>
<b>6.104.200.135 •</b>	<b>* 200</b>	<b>Grey</b>	<b>4120,0</b>	<b>M-H</b>	<b>135°</b>	<b>258,5</b>	<b>258,5</b>	<b>70,5</b>

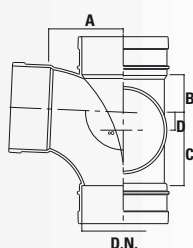
• High Impact Simple Branch

## DOUBLE BRANCH

REFERENCE	DIAMETER mm.	COLOUR	WEIGHT	TYPE OF UNION	ANGLE $\alpha$	A	B	C
206.040.135	40	Grey	144,00	H-H	135°	53,0	53,0	14,0
206.040.135.010	40	White	144,00	H-H	135°	53,0	53,0	14,0
206.050.092 ☐	50	Grey	188,00	H-H	92°	41,5	26,0	44,0
206.050.135 ☐	50	Grey	208,33	H-H	135°	65,0	62,0	17,0
106.083.092	83	Grey	623,00	H-H	92°	88,0	35,0	70,0
106.083.135	83	Grey	614,00	H-H	135°	108,0	101,5	19,0
106.110.092	110	Grey	927,00	H-H	92°	101,5	45,0	104,0
106.110.092.010	110	White	927,00	H-H	92°	101,5	45,0	104,0
106.110.135 ☐	110	Grey	900,00	H-H	135°	135,0	136,5	26,0
1.106.125.110.092	* 125x110	Grey	1246,85	H-H	92°	112,5	58,0	101,0
1.106.125.135	* 125	Grey	1548,20	H-H	135°	162,0	162,0	45,0
106.160.110.092	160x110	Grey	1077,70	H-H	92°	89,0	61,0	60,0
106.160.110.135	160x110	Grey	1480,00	H-H	135°	173,0	163,5	163,5

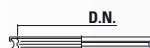
☒ Accessories certified by AENOR.

\* These fittings include rubber ring. All mouths of series 100 and 200 can be jointed through rubber ring tough the adapting ring.



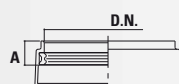
## SQUARE DOUBLE BRANCH

REFERENCE	DIAMETER mm.	COLOUR	WEIGHT	TYPE OF UNION	ANGLE $\alpha^\circ$	A	B	C	D
102.110.092	110	Grey	745,00	H-H	92°	104,0	45,0	104,0	29,5



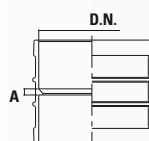
## ADAPTING RING

REFERENCE	DIAMETER mm.	COLOUR	WEIGHT
809.110	110	Grey	26,0
809.110.010	110	White	26,0



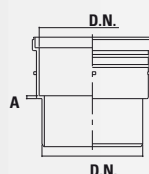
## SEAL RING ADAPTER FOR RAINWATER AND VENTILATION COUPLINGS

REFERENCE	DIAMETER mm.	COLOUR	WEIGHT	A
209.032	32	Grey	15,8	10,0
209.032.010	32	White	15,8	10,0
209.040	40	Grey	21,6	11,0
209.040.010	40	White	21,6	11,0
209.050	50	Grey	25,6	11,0
209.063	63	Grey	40,8	11,5
109.083	83	Grey	84,0	21,0
109.110	110	Grey	85,0	21,0
109.110.010	110	White	85,0	21,0
109.160	160	Grey	183,0	25,0



## STRAIGHT COUPLING

REFERENCE	DIAMETER mm.	COLOUR	WEIGHT	TYPE OF UNION	A
210.032 ☒	32	Grey	30,7	H-H	5,0
210.032.010	32	White	30,7	H-H	5,0
210.040 ☒	40	Grey	46,4	H-H	8,0
210.040.010	40	White	46,4	H-H	8,0
210.050 ☒	50	Grey	56,7	H-H	4,0
210.063	63	Grey	81,0	H-H	3,0
110.083	83	Grey	179,8	H-H	6,5
110.110 ☒	110	Grey	243,6	H-H	6,5
110.110.010	110	White	243,6	H-H	6,5
1.110.125	* 125	Grey	485,9	H-H	23,5
110.160	160	Grey	554,4	H-H	8,0
1.811.200	* 200	Grey	1316,4	H-H	12,5
6.110.250	* 250	Grey	2820,0	H-H	2,5



## STRAIGHT COUPLING FOR RAINWATER AND VENTILATION PIPES

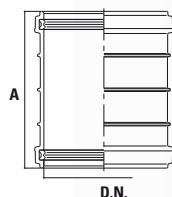
REFERENCE	DIAMETER mm.	COLOUR	WEIGHT	TYPE OF UNION	A
810.110	110	Grey	193,0	H-H	3,0
810.110.010	110	White	193,0	H-H	3,0



\* These fittings include rubber ring. All mouths of series 100 and 200 can be jointed through rubber ring tough the adapting ring

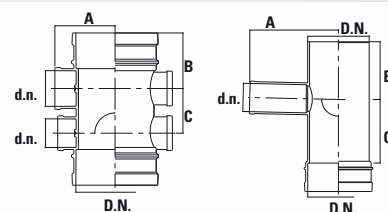
## STRAIGHT COUPLING FOR RAINWATER AND VENTILATION PIPES

REFERENCE	DIAMETER mm.	COLOUR	WEIGHT	TYPE OF UNION	A
211.032	* 32	Grey	61,5	H-H	70,0
211.040	* 40	Grey	84,3	H-H	82,5
211.050	* 50	Grey	103,9	H-H	82,5
211.063	* 63	Grey	156,5	H-H	98,0
111.083	* 83	Grey	346,6	H-H	149,5
1.111.110	* 110	Grey	368,0	H-H	149,5
1.111.110.010	* 110	White	368,0	H-H	149,5
1.111.125	* 125	Grey	421,8	H-H	163,0
111.160	* 160	Grey	899,3	H-H	210,0
1.816.200	* 200	Grey	1289,9	H-H	216,0
6.111.250	* 250	Grey	2.280,0	H-H	275,0



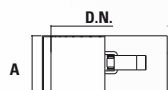
## BOSS CONNECTOR COUPLING

REFERENCE	DIAMETER mm.	COLOUR	WEIGHT	TYPE OF UNION	A	B	C	D
116.110.050.040	110x50x40	Grey	500,0	H-H	90°	86,0	78,5	86,0
116.110.050	110x50	Grey	545,0	M-H	90°	159,0	103,5	114,0



## BOSS CONNECTOR COUPLING

REFERENCE	DIAMETER mm.	COLOUR	WEIGHT	TYPE OF UNION	A
670.040	40	Red	160,0	H-H	-
670.050	50	Red	-	H-H	-
670.063	63	Red	-	H-H	-
670.083	83	Red	370,0	H-H	47,0
670.110	110	Red	385,0	H-H	47,0
670.125	125	Red	620,0	H-H	47,0
670.160	160	Red	775,0	H-H	47,0
670.200	200	Red	1075,0	H-H	62,0
670.250	250	Red	4880,0	H-H	-



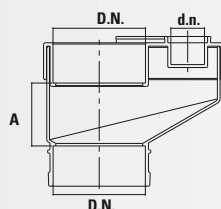
## FIRE COLLAR

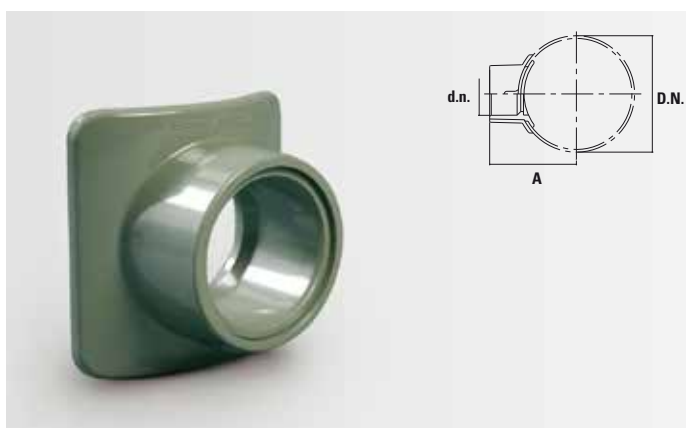
REFERENCE	DIAMETER mm.	COLOUR	WEIGHT	TYPE OF UNION	A
671.083	83	Red	280,0	H-H	-
671.110	110	Red	185,0	H-H	-
671.125	125	Red	340,0	H-H	-
671.160	160	Red	620,0	H-H	-



## COUPLING FOR WASTE CONNECTIONS

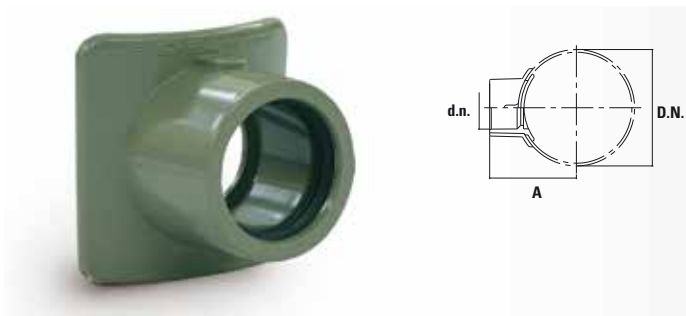
REFERENCE	DIAMETER mm.	COLOUR	WEIGHT	TYPE OF UNION	A	B
9.232.123.110	110x50x40	Grey	1015,4	H-H	75,0	77,0





## BOSS CONNECTOR

REFERENCE	NOMINAL DIAMETER D.N. X d.n.	COLOUR	WEIGHT	TYPE OF UNION	ANGLE $\alpha^\circ$	A
112.083.032	83x32	Grey	60,0	H	92°	69,0
112.083.040	83x40	Grey	84,2	H	92°	69,0
112.110.032	110x32	Grey	61,0	H	92°	79,0
112.110.040	110x40	Grey	80,0	H	92°	82,0
112.110.050	110x50	Grey	110,0	H	92°	89,0
112.125.040	125x40	Grey	80,0	H	92°	88,0
112.125.050	125x50	Grey	118,0	H	92°	95,0
112.160.040	160x40	Grey	73,0	H	92°	105,0
112.160.050	160x50	Grey	108,0	H	92°	109,0



## BOSS CONNECTOR WITH RUBBER RING

REFERENCE	NOMINAL DIAMETER D.N. X d.n.	COLOUR	WEIGHT	TYPE OF UNION	ANGLE $\alpha^\circ$	A
113.110.040	110x40	Grey	95	H	92°	95,0
113.110.050	110x50	Grey	140	H	92°	105,0
113.125.040	125x40	Grey	92	H	92°	100,0
113.125.050	125x50	Grey	135	H	92°	110,0
113.160.040	160x40	Grey	91	H	92°	120,0
113.160.050	160x50	Grey	124	H	92°	123,0



## 45° BOSS CONNECTOR

REFERENCE	NOMINAL DIAMETER D.N. X d.n.	COLOUR	WEIGHT	TYPE OF UNION	ANGLE $\alpha^\circ$	A
112.110.040.135	110x40	Grey	100,0	H	45°	-
112.110.050.135	110x50	Grey	141,7	H	45°	-



## STRAIGHT BOSS ADAPTOR FOR BRANCH

REFERENCE	NOMINAL DIAMETER D.N. X d.n.	COLOUR	WEIGHT	TYPE OF UNION	ANGLE $\alpha^\circ$	A
115.040	40	Grey	53	H	-	-
115.050	50	Grey	58	H	-	-



## SELF LOCKING BOSS

REFERENCE	NOMINAL DIAMETER D.N. X d.n.	COLOUR	WEIGHT	TYPE OF UNION	ANGLE $\alpha^\circ$	A
122.110.040	110x40	Grey	133,6	H	92°	110,0
122.110.050	110x50	Grey	159,0	H	92°	110,0



## SOCKET PLUG

REFERENCE	NOMINAL DIAMETER D.N. X d.n.	COLOUR	WEIGHT	TYPE OF UNION	ANGLE $\alpha^\circ$	A
130.083	83	Grey	106,0	M-H	-	51,0
130.110	110	Grey	136,0	M-H	-	51,0

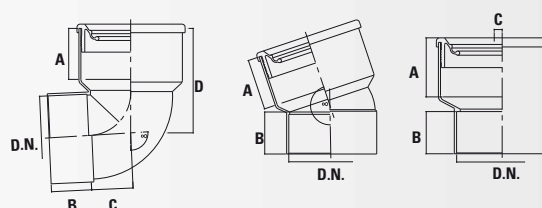
☒ Accessories certified by AENOR.

\* These fittings include rubber ring. All mouths of series 100 and 200 can be jointed through rubber ring tough the adapting ring.

\*\* Supplied with rubber ring for adaptation. References: 9.148.110 or 9.149.110 or 9.150.075

## SOCKET REDUCER

REFERENCE	NOMINAL DIAMETER D.N. X d.n.	COLOUR	WEIGHT (grs.)	TYPE OF UNION	MODEL	A	B
224.040.032 ☒	40x32	Grey	17,4	M-H	B	26,0	-
224.050.032 ☒	50x32	Grey	35,0	M-H	B	31,0	5,5
224.050.040 ☒	50x40	Grey	31,8	M-H	B	31,0	-
224.063.050	63x50	Grey	57,3	M-H	B	36,0	-
124.083.050	83x50	Grey	93,1	M-H	B	50,0	12,5
124.110.050	110x50	Grey	148,4	M-H	B	51,0	26,5
124.110.063	110x63	Grey	122,0	M-H	B	50,4	20,0
124.110.083	110x83	Grey	140,0	M-H	B	51,0	11,0
124.125.110	125x110	Grey	233,0	M-H	B	75,5	3,0
124.160.110	160x110	Grey	290,0	M-H	B	76,0	21,5
124.160.125	160x125	Grey	342,0	H-H	B	76,0	14,5
124.200.110	200x110	Grey	500,0	M-H	C	196,0	43,0
1.124.200.125	200x125	Grey	1021,0	M-H	C	187,6	35,8
124.200.160	200x160	Grey	940,0	M-H	C	146,9	18,0
123.200.110	200x110	Grey	460,0	M-H	A	63,0	-
123.200.160	200x160	Grey	492,0	M-H	A	37,0	-



## WC CONNECTOR \*\*

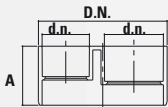
REFERENCE	NOMINAL DIAMETER D.N. X d.n.	COLOUR	WEIGHT (grs.)	TYPE OF UNION	ANGLE $\alpha^\circ$	A	B
125.110.110	110	White	339,0	H-H	-	69,0	51,0
125.110.092.110	110	White	539,0	H-H	92°	69,0	51,0
125.110.163.110	110	White	386,0	H-H	163°	69,0	51,0

## WC CONNECTOR \*\*

REFERENCE	NOMINAL DIAMETER D.N. X d.n.	COLOUR	WEIGHT (grs.)	TYPE OF UNION	A
126.083.015	83	Grey	306,0	M-H	150,0
126.083.025	83	Grey	424,0	M-H	250,0
126.083.040	83	Grey	602,0	M-H	400,0
126.083.070	83	Grey	957,0	M-H	700,0
126.110.015.110	110	Grey	373,0	M-H	150,0
126.110.025.110	110	Grey	535,0	M-H	250,0
126.110.040.110	110	Grey	778,0	M-H	400,0
126.110.070.110	110	Grey	1264,0	M-H	700,0

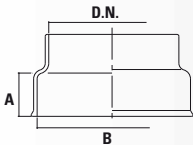
## POST - FORMED SOCKET CONNECTOR F-F

REFERENCE	NOMINAL DIAMETER D.N. X d.n.	COLOUR	WEIGHT (grs.)	TYPE OF UNION	A	B	C
127.110.110	** 110	Grey	726,0	H-H	150	360	51



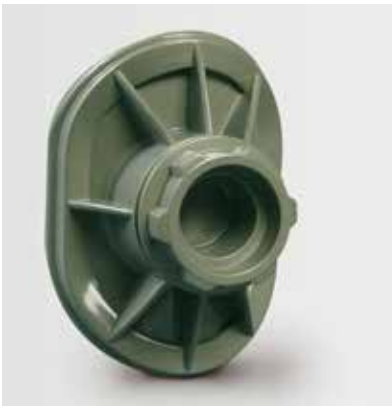
BOSS ENTRY M-F

REFERENCE	NOMINAL DIAMETER D.N. X d.n.	COLOUR	WEIGHT (grs.)	TYPE OF UNION	A
129.110.050.040	110x50x40	Grey	156,28	M-H	50,4



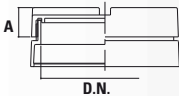
WEATHERING APRON

REFERENCE	NOMINAL DIAMETER D.N. X d.n.	COLOUR	WEIGHT (grs.)	TYPE OF UNION	A	B
131.083	83	Grey	74,0	H	38,0	102,0
131.110	110	Grey	98,0	H	38,0	130,0
131.160	160	Grey	235,0	H	51,0	180,0



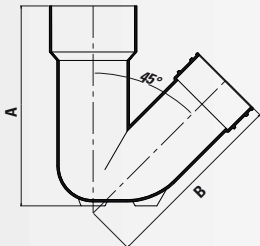
ACCESS DOOR

REFERENCE	NOMINAL DIAMETER D.N. X d.n.	COLOUR	WEIGHT (grs.)	A	B
135.083	83	Grey	127,0	114,0	82,5
135.110	110	Grey	371,0	154,0	109,0
135.160	160	Grey	333,0	155,0	110,0



ACCESS CAP

REFERENCE	NOMINAL DIAMETER D.N. X d.n.	COLOUR	WEIGHT (grs.)	TYPE OF UNION	A
237.040	40	Grey	41,0	M	14,5
237.050	50	Grey	63,5	M	14,5
136.083	83	Grey	124,5	H	28,0
136.110	110	Grey	187,3	H	28,0
1.136.125	125	Grey	348,0	H	21,0
136.160	160	Grey	511,0	H	44,0



P-TRAP

REFERENCE	NOMINAL DIAMETER D.N. X d.n.	COLOUR	WEIGHT (grs.)	TYPE OF UNION	A	B
149.110.135	110	Grey	1000,0	H	304,0	285,0



## SCREW TO WALL HOLDERBAT

REFERENCE	D. NOMINAL D.N. X d.n.	COLOUR	THICKNESS	WEIGHT	MATERIAL	A	B
240.032	32	Grey	3,2	16,0		36,0	55,0
240.032.010	32	White	3,2	16,0		36,0	55,0
240.040	40	Grey	3,2	17,0		36,0	65,0
240.040.010	40	White	3,2	17,0		36,0	65,0
240.050	50	Grey	3,2	22,0		40,5	80,0
140.083	83	-	2,0	196,0	STEEL	75,5	144,0
140.110	110	-	2,5	268,0	STEEL	89,5	174,0
140.125	125	-	2,5	268,0	STEEL	96,5	172,0
140.160	160	-	2,5	225,0	STEEL	115,0	225,0
640.200.001	200	-	3,5	565,0	STEEL	135,0	102,0
640.250.002	250	-	3,0	1650,0	STEEL	155,0	220,0
640.315.002	315	-	3,2	1900,0	STEEL	187,0	250,0

## BUILD-IN HOLDERBAT

REFERENCE	D. NOMINAL D.N. X d.n.	COLOUR	THICKNESS	WEIGHT	MATERIAL	A	B
141.083	83	-	-	236,0	STEEL	75,5	140,5
141.110	110	-	-	338,0	STEEL	89,5	140,5
141.125	125	-	-	338,0	STEEL	96,5	140,5
141.160	160	-	-	676,0	STEEL	115,0	163,0
141.200	200	-	-	285,0	STEEL	-	-167,
641.200.001	200	-	-	628,0	STEEL	124,0	0

## CLIP FOR M-8 THREADED ROD

REFERENCE	D. NOMINAL D.N. X d.n.	COLOUR	THICKNESS	WEIGHT	MATERIAL	A
642.050.008	50	-	-	108,0	STEEL	45,0
642.063.008	63	-	-	-	STEEL	-
642.083.008	83	-	-	132,0	STEEL	55,0
642.110.008	110	-	-	148,0	STEEL	77,0
642.125.008	125	-	-	150,0	STEEL	85,0
642.160.008	160	-	-	260,0	STEEL	102,0
642.200.008	200	-	-	282,0	STEEL	122,0
642.250.008	250	-	-	352,0	STEEL	147,0
642.315.008	315	-	-	424,0	STEEL	180,0

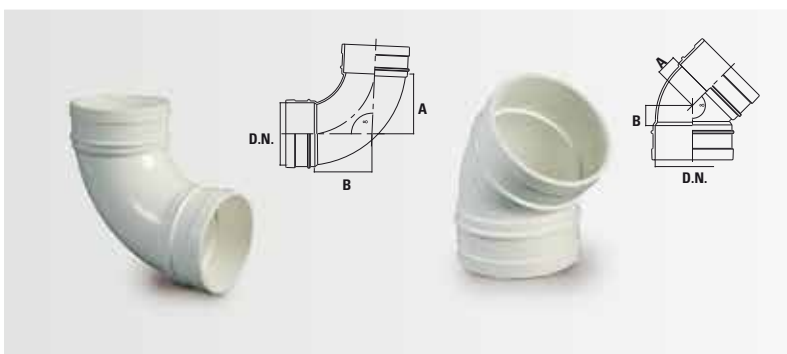
## SOUND PROOF PIPE CLIP FOR THREADED BAR M-8

REFERENCE	D. NOMINAL D.N. X d.n.	COLOUR	THICKNESS	WEIGHT	MATERIAL
INS 643.032.008	32	-	-	-	STEEL
INS 643.040.008	40	-	-	96,0	STEEL
INS 643.050.008	50	-	-	104,0	STEEL
INS 643.063.008	63	-	-	-	STEEL
INS 643.083.008	83	-	-	166,1	STEEL
INS 643.125.008	125	-	-	275,0	STEEL
INS 643.160.008	160	-	-	419,0	STEEL
INS 643.200.008	200	-	-	479,0	STEEL
INS 643.250.008	250	-	-	430,0	STEEL
INS 643.315.008	315	-	-	530,0	STEEL



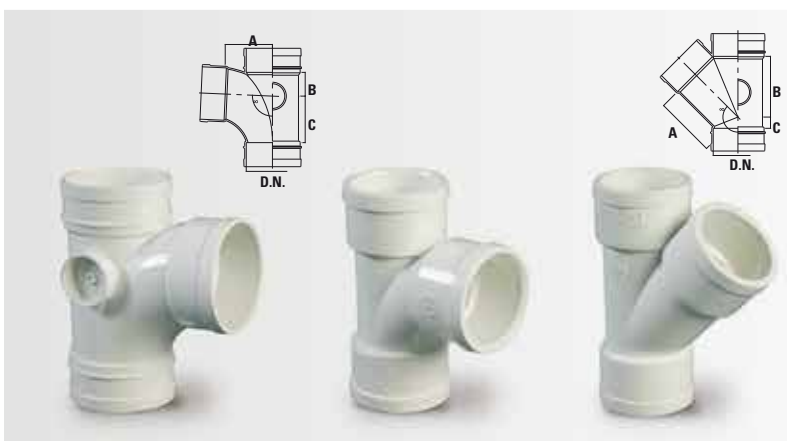


**White Series**



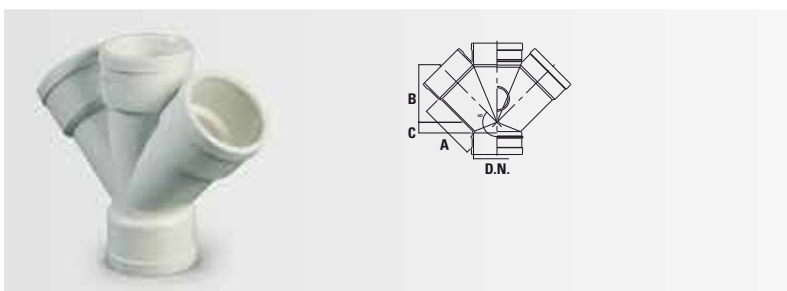
## ELBOW

REFERENCE	DIAMETER mm.	WEIGHT	TYPE OF UNION	ANGLE $\alpha^\circ$	A	B
201.032.092.010	32	49,0	H-H	92°	25,0	21,0
201.032.135.010	32	45,2	H-H	135°	15,0	15,0
201.040.092.010	40	75,6	H-H	92°	39,0	39,0
201.040.135.010	40	55,8	H-H	135°	11,0	11,0
201.050.092.010	50	110,1	H-H	92°	41,5	41,5
101.110.092.010	110	520,0	H-H	92°	107,0	100,0
101.110.135.010	110	353,8	H-H	135°	30,0	30,0
107.110.135.010	110	286,0	M-H	135°	90,0	24,0



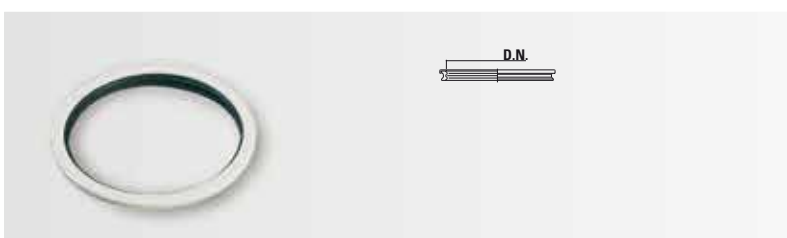
## SINGLE BRANCH

REFERENCE	DIAMETER mm.	WEIGHT	TYPE OF UNION	ANGLE $\alpha^\circ$	A	B	C
204.032.135.010	32	79,0	H-H	135°	44,5	44,5	11,5
204.040.092.010	40	99,5	H-H	92°	35,0	20,0	35,0
204.040.135.010	40	116,0	H-H	135°	53,0	53,0	14,0
204.050.092.010	50	153,7	H-H	92°	41,0	26,0	44,0
104.110.092.010	110	708,8	H-H	92°	101,5	45,0	104,0
104.110.135.010	110	784,0	H-H	135°	136,5	-	26,0



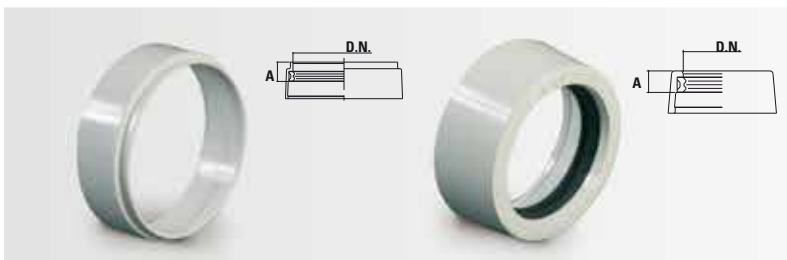
## DOUBLE BRANCH

REFERENCE	DIAMETER mm.	WEIGHT	TYPE OF UNION	ANGLE $\alpha^\circ$	A	B
206.040.135.010	40	144,0	H-H	135°	53,0	55,0
106.110.092.010	110	927,0	H-H	92°	53,0	65,0



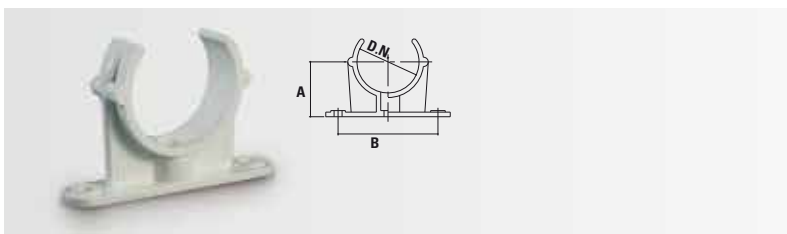
## SEAL RING ADAPTER FOR RAINWATER AND VENTILATION COUPLING

REFERENCE	DIAMETER mm.	WEIGHT
809.110.010	110	26,0



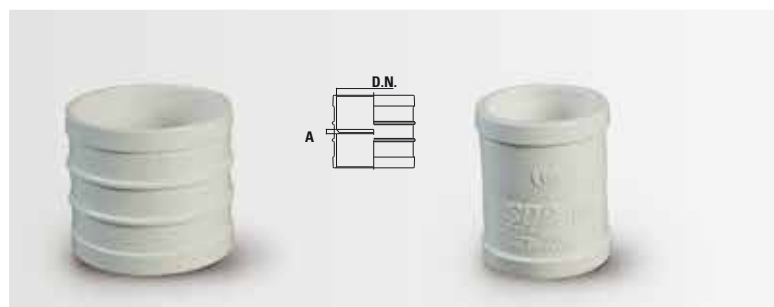
## ADAPTING RING

REFERENCE	DIAMETER mm.	WEIGHT	A
209.032.010	32	15,8	10,0
209.040.010	40	21,6	11,0
109.110.010	110	85,0	21,0



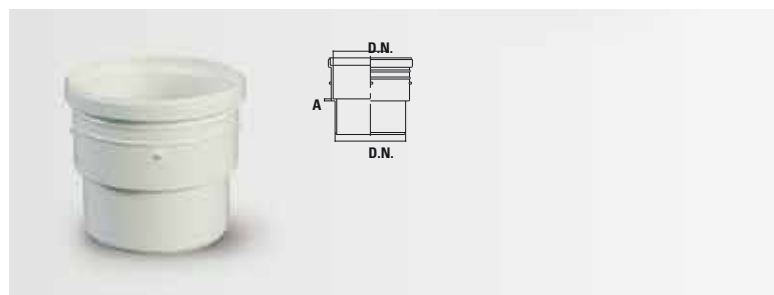
## SCREW TO WALL HOLDERBAT

REFERENCE	DIAMETER mm.	THICKNESS	WEIGHT	MATERIAL	A	B
240.032.010	32	3,2	16,0	PVC-U	36,0	55,0
240.040.010	40	3,2	17,0	PVC-U	36,0	65,0



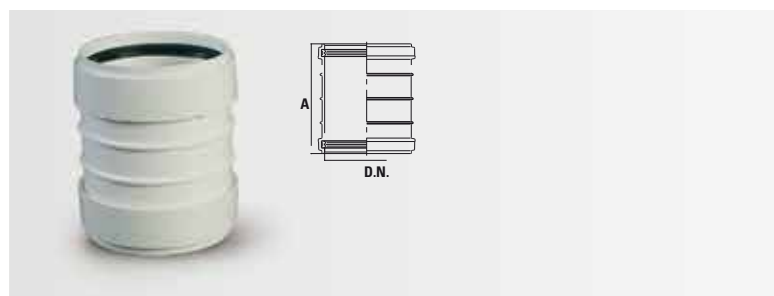
## STRAIGHT COUPLING

REFERENCE	D.NOMINAL D.N.	WEIGHT	TYPE OF UNION	A
210.032.010	32	30,7	H-H	5,0
210.040.010	40	46,4	H-H	8,0
110.110.010	110	243,6	H-H	6,5



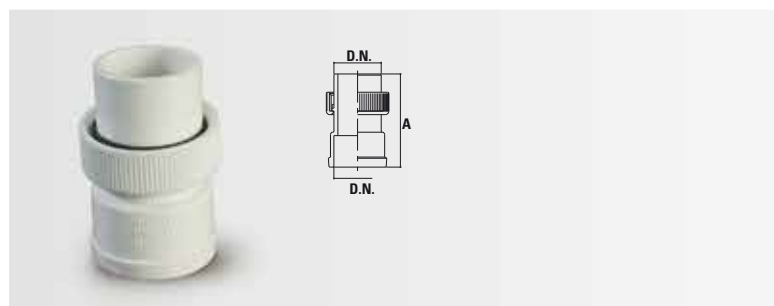
## STRAIGHT COUPLING FOR RAINWATER AND VENTILATION PIPES

REFERENCE	D.NOMINAL D.N.	WEIGHT	TYPE OF UNION	A
810.110.010	110	193,0	H-H	3,0



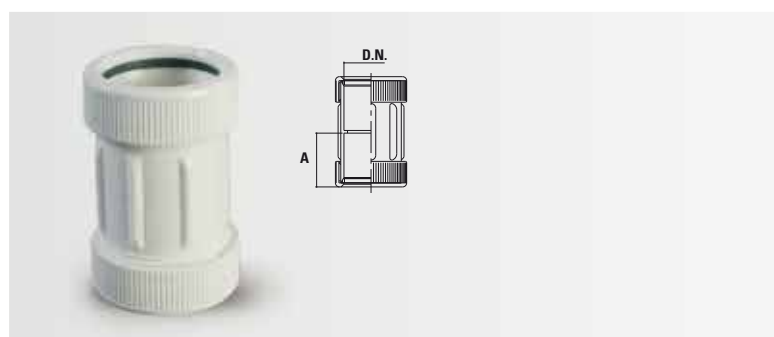
## SLIP COUPLING

REFERENCE	D.NOMINAL D.N.	WEIGHT	TYPE OF UNION	A
1.111.110.010	* 110	368,0	H-H	149,5



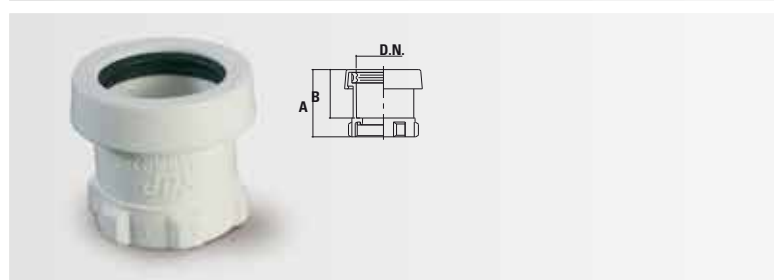
## M-F STRAIGHT COUPLING

REFERENCE	D.NOMINAL D.N.	THICKNESS	WEIGHT	TYPE OF UNION	A
319.040	40	3	59	M-H	53,0



## M-F STRAIGHT COUPLING

REFERENCE	D. NOMINAL D.N.	THICKNESS	WEIGHT	TYPE OF UNION	A
341.032	32	2,5	42,0	H	36,0
341.040	40	2,5	46,0	H	36,0
341.050	50	2,5	64,0	H	36,0

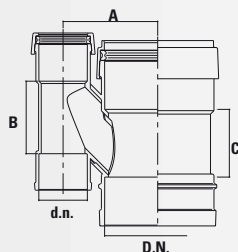


## ADAPTER COUPLING WITH THREADED MOUTH

REFERENCE	D. NOMINAL D.N.	THICKNESS	WEIGHT	TYPE OF UNION	A	B
350.032.125	32-1 1/4"	2,5	21,8	H	53,0	24,0
350.040.125	40-1 1/4"	2,5	35,7	H	57,5	38,5
350.040.150	40-1 1/2"	2,5	38,3	H	57,5	38,5

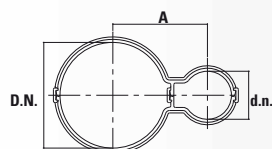


**Ventilation Series**



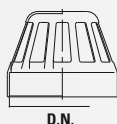
## CROSS-VENT CONNECTOR

REFERENCE	D.NOMINAL D.N. x d.n.	COLOUR	WEIGHT	TYPE OF UNION	ANGLE $\alpha^\circ$	A	B	C
108.110.050	110x50	Grey	582,6	H-H	135°	98,5	76,5	70,0
108.110.063	110x63	Grey	725,8	H-H	135°	105,0	93,0	102,0



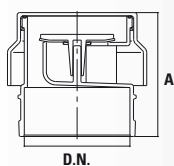
## CROSS VENT CONNECTOR PIPE CLIP

REFERENCE	D.NOMINAL D.N. x d.n.	COLOUR	WEIGHT	A
148.110.050	110x50	Grey	81,0	98,5



## VENT COWL

REFERENCE	D.NOMINAL D.N. x d.n.	COLOUR	WEIGHT	TYPE OF UNION
150.083	83	Grey	56,0	H
150.110	110	Grey	95,0	H
150.160	160	Grey	170,0	H



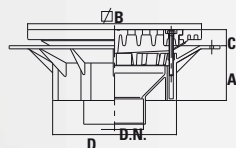
## VENT COWL WITH VALVE

REFERENCE	D.NOMINAL D.N. x d.n.	COLOUR	WEIGHT	A
151.040	40	White	74,0	65,0
151.110	110	Grey	575,0	130,0



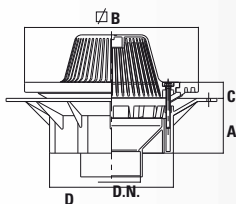


## **Rainwater Series**



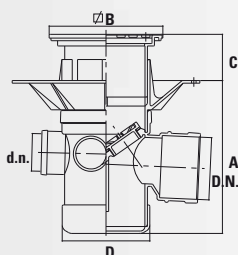
## FLAT SUMP COVER FOR ROOFS, GARAGES, TERRACES, ETC. HIGH IMPACT

REFERENCE	D.NOMINA L.D.N.	COLOUR	WEIGHT grs.	TYPE OF UNION	A	B	C <sub>max</sub>	C <sub>min</sub>	D
870.110	110	Grey	4270,0	H	149,0	300,0	53,0	20,0	236,5
870.125	125	Grey	4644,0	H	133,0	300,0	53,0	20,0	236,5
870.160	160	Grey	4302,0	H	133,0	300,0	53,0	20,0	236,5
870.200	200	Grey	3810,0	H	104,0	300,0	53,0	20,0	236,5



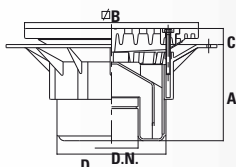
## SUMP COVER WITH HOOD FOR ROOFS, TERRACES, ETC. HIGH IMPACT

REFERENCE	D.NOMINA L.D.N.	COLOUR	WEIGHT grs.	TYPE OF UNION	A	B	C <sub>max</sub>	C <sub>min</sub>	D
871.110	110	Grey	3886,0	H	149,0	300,0	53,0	20,0	236,5
871.125	125	Grey	4260,0	H	133,0	300,0	53,0	20,0	236,5
871.160	160	Grey	3918,0	H	133,0	300,0	53,0	20,0	236,5
871.200	200	Grey	3426,0	H	104,0	300,0	53,0	20,0	236,5



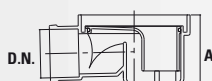
## BOTTLE TRAP WITH SUMP COVER FOR ROOFS, GARAGES, ETC.

REFERENCE	D.NOMINA L.D.N.	COLOUR	WEIGHT grs.	TYPE OF UNION	A <sub>max</sub>	A <sub>min</sub>	B	C <sub>max</sub>	C <sub>min</sub>	D
872.050	50	Grey	1770,0	H	no limit	205,0	152,0	70,0	29,0	117,0
872.083	83	Grey	1649,0	H	no limit	205,0	152,0	70,0	29,0	117,0



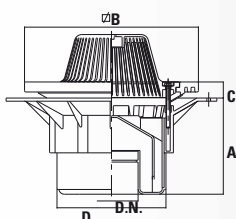
## BOTTLE TRAP WITH SUMP COVER FOR ROOFS, GARAGES, ETC. HIGH IMPACT

REFERENCE	D.NOMINA L.D.N.	COLOUR	WEIGHT grs.	TYPE OF UNION	A <sub>max</sub>	A <sub>min</sub>	B	C <sub>max</sub>	C <sub>min</sub>	D
872.110	* 110	Grey	5188,0	H	no limit	210,0	300,0	53,0	20,0	210,0



## BOTTOM PART OF ACCESSED SUMP WITH HORIZONTAL OUTLET

REFERENCE	D.NOMINA L.D.N.	COLOUR	WEIGHT grs.	TYPE OF UNION	A
872.050.030	50	Grey	260,0	H	74,0

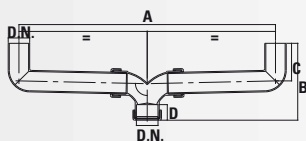


## BOTTLE TRAP HOOD FOR ROOFS, TERRACES, ETC. HIGH IMPACT

REFERENCE	D.NOMINA L.D.N.	COLOUR	WEIGHT grs.	TYPE OF UNION	A <sub>max</sub>	A <sub>min</sub>	B	C <sub>max</sub>	C <sub>min</sub>	D
873.110	* 110	Grey	260,0	H	no limit	210,0	300,0	53,0	20,0	210,0

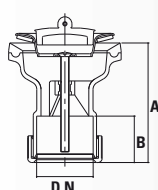


**Waste outlets and traps**



## TEES AND ELBOWS

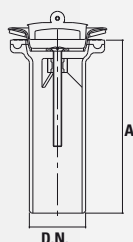
REF.	D.NOM. D.N.	COLOUR	THICKNESS	WEIGHT	TYPE OF UNION	ANGLE $\alpha^\circ$	A máx	A mín	B máx	B mín	C	D
304.040.092	40	White	2,5	260,0	M-H	91 1/4°	478,0	176,5	141,5	110,5	70,0	29,0



## SMALL WASTE OUTLET WITH PLUG (FOR STAINLESS STEEL SINKS)

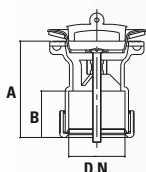
REFERENCE	D. NOMINAL D.N. X d.n.	COLOUR	THICKNESS	ANGLE $\alpha^\circ$	TYPE OF UNION	A	B
310.040	40	White	2,5	154,0	H	85,0	33,0

# Washbasins and bidets



## WASTE OUTLET WITH PLUG (FOR WASH BASINS AND BIDETS)

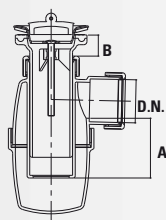
REFERENCE	D. NOMINAL D.N. X d.n.	COLOUR	THICKNESS	ANGLE $\alpha^\circ$	TYPE OF UNION	A
309.032	32	White	2,5	145,0	M	142
309.040	40	White	2,5	152,0	M	130



## WASTE OUTLET WITH PLUG (FOR WASH BASINS, BIDETS AND SINKS)

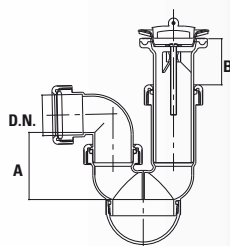
REFERENCE	D. NOMINAL D.N. X d.n.	COLOUR	THICKNESS	WEIGHT	TYPE OF UNION	A	B
311.032	32	White	2,5	145,0	H	72,5	33,0
311.040	40	White	2,5	147,0	H	72,5	33,0
311.050	50	White	2,5	167,5	H	76,5	33,0

# Showers



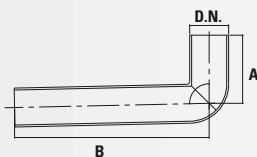
## WASTE OUTLET AND BOTTLE TRAP WITH PLUG (FOR WASH BASINS AND BIDETS)

REFERENCE	D. NOMINAL D.N. X d.n.	COLOUR	THICKNESS	WEIGHT	TYPE OF UNION	A	B máx	B mín
372.032.114	32	White	2,5	267,0	H	55,0	116,0	27,0
372.040.114	40	White	2,5	293,0	H	55,0	103,0	18,5
372.032.001.114	32	White	2,5	264,0	H	55,0	116,0	27,0
372.040.001.114	40	White	2,5	282,0	H	55,0	103,0	18,5



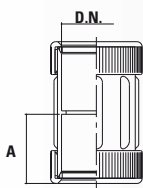
## VALVE AND BALL TRAP WITH PLUG (FOR WASH BASINS AND BIDETS)

REFERENCE	D. NOMINAL D.N. X d.n.	COLOUR	THICKNESS	WEIGHT	TYPE OF UNION	A	B máx	B mín
382.040.065	40	White	2,5	316,0	H	65,0	103,0	18,5



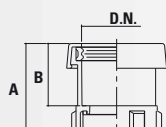
## WASTE OUTLET ELBOW

REFERENCE	D. NOMINAL D.N. X d.n.	COLOUR	THICKNESS	WEIGHT	TYPE OF UNION	A	B máx	B mín
359.040.092	40	White	2,5	65,0	H	91 1/4°	70,0	200,0



## ADAPTER COUPLING FOR NUT JOINTS

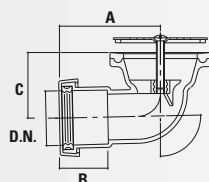
REFERENCE	D. NOMINAL D.N.	COLOUR	THICKNESS	WEIGHT	TYPE OF UNION	A
341.032	32	White	2,5	42,0	H	36,0
341.040	40	White	2,5	46,0	H	36,0
341.050	50	White	2,5	64,0	H	36,0



## ADAPTER COUPLING WITH THREADED MOUTH

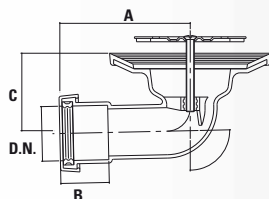
REFERENCE	D. NOMINAL D.N.	COLOUR	THICKNESS	WEIGHT	TYPE OF UNION	A	B
350.032.125	32-1 1/4"	White	2,5	21,8	H	53,0	24,0
350.040.125	40-1 1/4"	White	2,5	35,7	H	57,5	38,5
350.040.150	40-1 1/2"	White	2,5	38,3	H	57,5	38,5





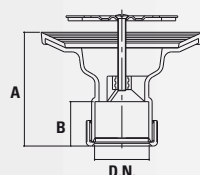
## WASTE OUTLET BEND

REFERENCE	NOMINAL D.N.	COLOUR	THICKNESS	WEIGHT	TYPE OF UNION	ANGLE $\alpha^\circ$	A	B	C
313.040.092	40	White	2,5	131	H	91 1/4°	75,0	36,0	47,5
313.050.092	50	White	2,5	134	H	91 1/4°	72,0	41,0	56,0



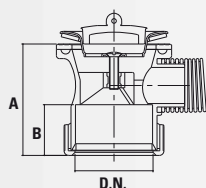
## LARGE WASTE OUTLET BEND

REFERENCE	NOMINAL D.N.	COLOUR	THICKNESS	WEIGHT	TYPE OF UNION	ANGLE $\alpha^\circ$	A	B	C
313.040.092.001	40	White	3	100	H	91 1/4°	97,0	36,0	58,0
313.040.092.090	40	White	3	185	H	91 1/4°	75,0	36,0	47,0



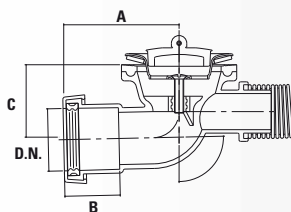
## LARGE WASTE OUTLET

REFERENCE	NOMINAL D.N.	COLOUR	THICKNESS	WEIGHT	TYPE OF UNION	ANGLE $\alpha^\circ$	A	B
313.040.001	40	White	3	148	H	0	85,0	33,0
313.040.001.090	40	White	3	155	H	0	85,0	33,0



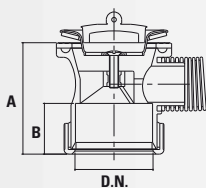
## WASTE OUTLET WITH OVERFLOW PIPE AND PLUG (for baths, hip-baths, etc..)

REFERENCE	DIAMETER mm.	COLOUR	THICKNESS	WEIGHT	TYPE OF UNION	ANGLE $\alpha^\circ$	A	B
312.050	50	White	3	225	H	0	73,5	33,0



## WASTE OUTLET WITH OVERFLOW PIPE AND PLUG (for baths, hip-baths, etc..)

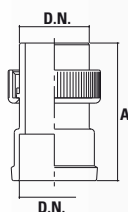
REFERENCE	DIAMETER mm.	COLOUR	THICKNESS	WEIGHT	TYPE OF UNION	ANGLE $\alpha^\circ$	A	B	C
314.040.092	40	White	3	229	H	91 1/4°	75,0	36,0	47,5
314.050.092	50	White	3	238	H	91 1/4°	75,0	41,0	52,0



## WASTE OUTLET WITH OVERFLOW PIPE AND PLUG (for baths, hip-baths, etc..)

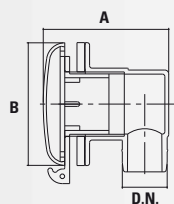
REFERENCE	DIAMETER mm.	COLOUR	THICKNESS	WEIGHT	TYPE OF UNION	ANGLE $\alpha^\circ$	A	B
318.040.12	40	White	3	226	H	0	72,5	33,0

5



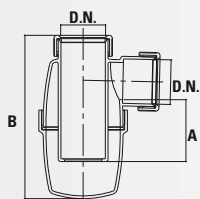
## M-F STRAIGHT COUPLING

REFERENCE	DIAMETER mm.	COLOUR	THICKNESS	WEIGHT	TYPE OF UNION	A	B	C
319.040	40	White	3	59	M-H	53,0		0,0



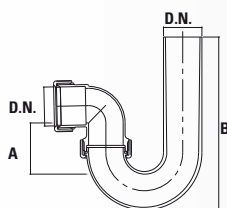
## OVERFLOW (for baths, hip-baths, etc..)

REFERENCE	DIAMETER mm.	COLOUR	THICKNESS	WEIGHT	A	B
387.029	29	White and Chromium plated	3	115	82,0	80,0



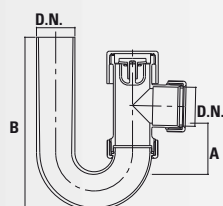
## BOTTLE TRAP

REFERENCE	DIAMETER mm.	COLOUR	THICKNESS	WEIGHT	TYPE OF UNION	A	B	C
372.040	40	White	2,5	141	H	55,0	148,0	0,0



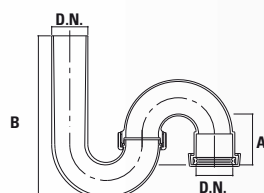
## TUBULAR "P" TRAP

REFERENCE	DIAMETER mm.	COLOUR	THICKNESS	WEIGHT	TYPE OF UNION	A	B máx	B mín
380.032	32	White	2,5	85	M-H	55,0	181,5	78,0
380.040	40	White	2,5	116	M-H	55,0	180,0	80,0
380.050	50	White	2,5	167	M-H	55,0	212,0	95,0



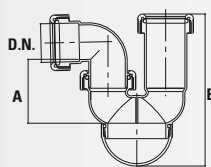
## P-TRAP WITH VENTILATION MEMBRANE VALVE FOR SKINS AND BIDETS

REFERENCE	DIAMETER mm.	COLOUR	THICKNESS	WEIGHT	TYPE OF UNION	A	B	C
380.040.151	40	White	2,5	164	M-H	55,0	180,0	80,0



## TUBULAR "S" TRAP

REFERENCE	DIAMETER mm.	COLOUR	THICKNESS	WEIGHT	TYPE OF UNION	A	B	C
381.032	32	White	2,5	100,8	M-H	55,0	181,5	78,0
381.040	40	White	2,5	145,6	M-H	55,0	180,0	80,0

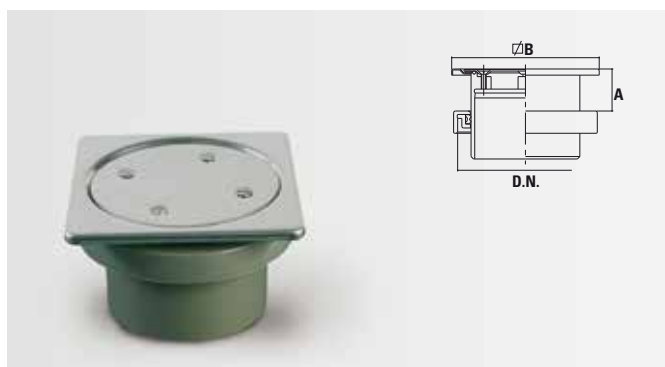


## BALL TRAP

REFERENCE	DIAMETER mm.	COLOUR	THICKNESS	WEIGHT	TYPE OF UNION	A	B
382.040.065.010	40	White	2,5	164	H	65,0	158,0

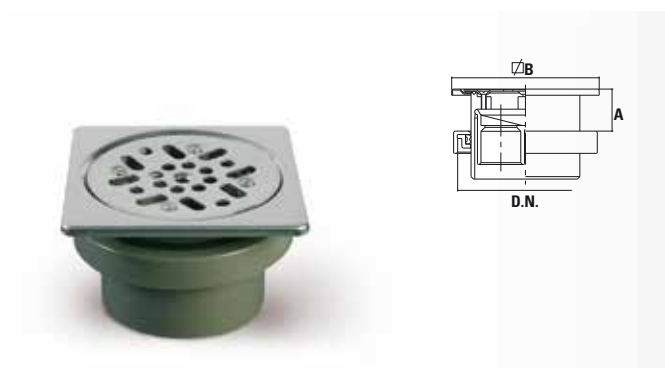
# Integrated parts for bottle traps

For correct installation of siphon traps with lid sink, you must place the corresponding pipe Ø32 to get the necessary water seal.



## BLANK COVER AND STAINLESS STEEL FRAME

REFERENCE	DIAMETER mm.	COLOUR	WEIGHT	A máx	A mín	B
404.110.001	110	Grey	347,5	57,0	5,0	120,0
404.125.001	125	Grey	377,6	57,0	5,0	120,0
404.160.001	160	Grey	531,5	57,0	5,0	120,0
404.110	110	Grey	282,5	57,0	1,0	-
404.125	125	Grey	312,5	57,0	1,0	-
404.160	160	Grey	466,5	57,0	1,0	-



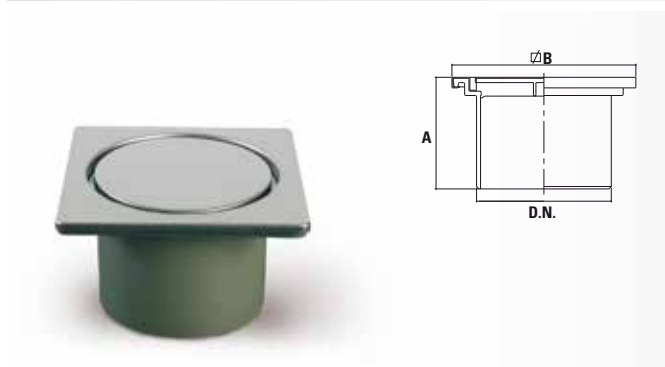
## SUMP COVER AND STAINLESS STEEL FRAME

REFERENCE	DIAMETER mm.	COLOUR	WEIGHT	A máx	A mín	B
405.110.001	110	Grey	376,5	57,0	5,0	120,0
405.125.001	125	Grey	406,5	57,0	5,0	120,0
405.160.001	160	Grey	560,5	57,0	5,0	120,0
405.110	110	Grey	311,5	57,0	1,0	-
405.125	125	Grey	341,5	57,0	1,0	-
405.160	160	Grey	495,5	57,0	1,0	-



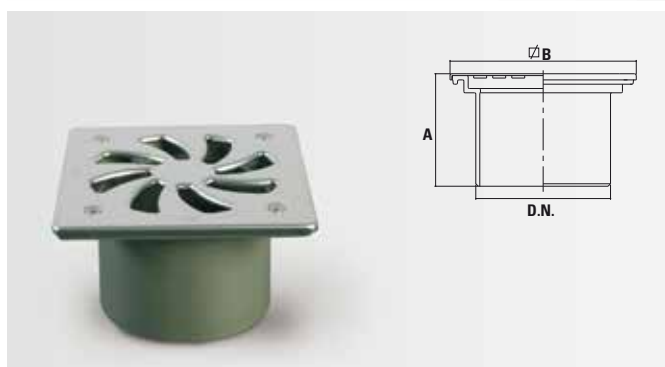
## STAINLESS STEEL BLANK COVER

REFERENCE	DIAMETER mm.	COLOUR	WEIGHT	A
406.110	110	Grey	241,0	130,0



## SQUARE SUMP COVER WITH STAINLESS STEEL COATING

REFERENCE	DIAMETER mm.	COLOUR	WEIGHT	A	B
407.110	110	Grey	589,0	91,0	150,0



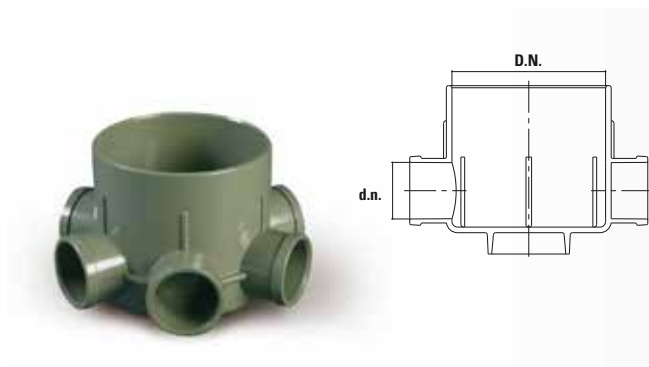
## STAINLESS STEEL SUMP COVER

REFERENCE	DIAMETER mm.	COLOUR	WEIGHT	A	B
408.110	110	Grey	487,0	93,0	152,0



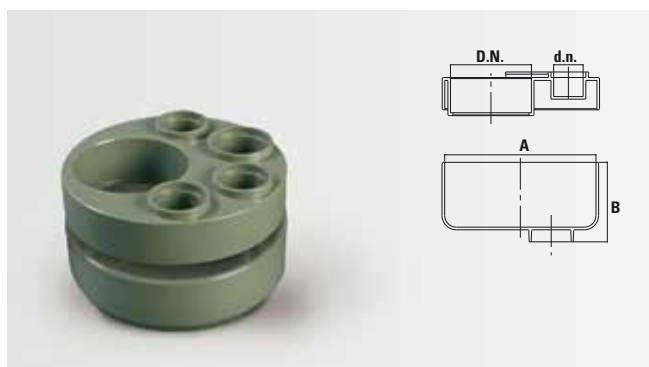
## BOTTOM PART OF BOTTLE TRAP

REFERENCE	DIAMETER mm.	COLOUR	WEIGHT
9.207.110	110	Grey	113,0
9.207.125	125	Grey	119,0
9.207.160	160	Grey	284,0



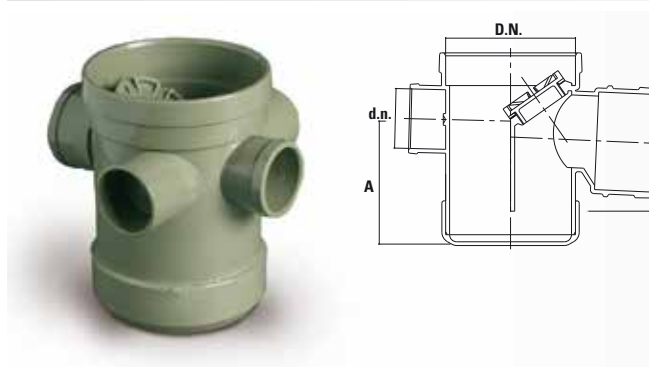
## BOTTOM PART Ø110 TO 6 MOUTH OF Ø40

REFERENCE	DIAMETER mm.	COLOUR	WEIGHT
9.227.110.040	110 x 40	Grey	400,0



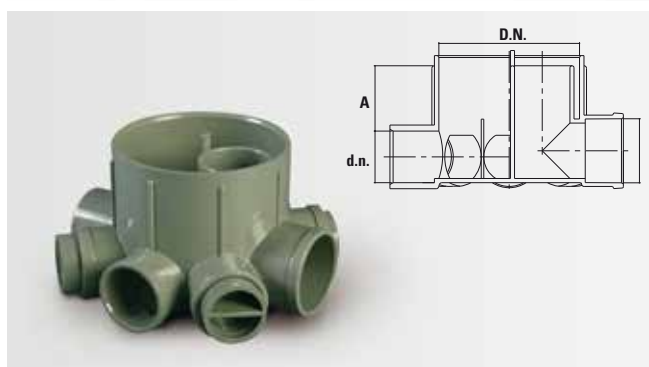
## BODY AND BOTTOM PART OF BOTTLE TRAP WITH SWIVELS MOUTH

REFERENCE	DIAMETER mm.	COLOUR	DENOMINATION	WEIGHT
9.232.110	110 x 50 x 40	Grey	High part of the body of the bottle trap with swivels mouth.	460,0
9.233.110	110 x 50 x 40	Grey	Prolonged concentric reducer of bottle trap for adjustable outlets.	420,0



## FOUR OUTLET BOTTLE TRAP WITH ACCESS DOOR

REFERENCE	DIAMETER mm.	COLOUR	WEIGHT	A	B
9.235.110.050	110 x 50 x 50	Grey	732,5	106	55
9.235.110.083	110 x 50 x 83	Grey	661,5	106	55



## EIGHT OUTLET BOTTLE TRAP WITH FOUR PLUGS

REFERENCE	DIAMETER mm.	COLOUR	WEIGHT	A
9.237.110.004	110 x 50 x 40	Grey	400,0	55

## COMPONENTS FOR BOTTLE TRAPS

REFERENCE	DENOMINATION
116.110.050	Bottle trap body of Ø110 with outlet to Ø50
224.050.040.001	Prolonged concentric reducer of bottle trap for adjustable outlets
9.234.040	Rubber grab ring for body ref. 9232
9.234.050	Rubber grab ring for body ref. 9232
9.215.040	Plug for Ø40 outlet
9.228.040	Plug for Ø50 outlet
9.229.050	Boss coupling for hydraulic seal for lower bottle trap outlets than Ø50
9.229.050.090	Boss for hydraulic seal for lower bottle trap outlets than Ø50
9.230.050	Straight coupling for hydraulic seal Ø50
9.231.040.090	Sweep bend male-female bottle trap house connection Ø40
9.804.110	Sump body

## COMPONENTS FOR TRAPS

REFERENCE	DENOMINATION
872.050.030	Accessed sump with horizontal outlet equal diameter.
9.801	Flat sump cover for references 870.110, 870.125, 870.160, 870.200 871.110, 871.125, 871.160, 871.200 y 872.110
9.802	Hood sump for references 871.110, 871.125, 871.160, 871.200 y 873.110
9.804	Main body for references 870.110, 870.125, 870.160, 870.200, 871.110, 871.125, 871.160, 871.200, 872.110 y 873.110
9.805	Closing cap for references 872.110 y 873.110
9.806	Lower body for references 872.110 y 873.110
9.810	Jointed sump ring for references 870.110, 870.125, 870.160, 870.200, 871.110, 871.125, 871.160, 871.200, 872.110 y 873.110
9.811	Square enclosure sump cover for references 870.110, 870.125, 870.160, 870.200, 871.110, 871.125, 871.160, 871.200, 872.110 y 873.110





**Fittings, Tools and Spares**

## LIQUIDS

REFERENCE	DESCRIPTION
9.101	Soldering liquid for PVC-U 500 cc pressure system
9.102	Soldering liquid for PVC-U 500 cc drainage system
9.102.003	Soldering liquid for PVC-U 125 cc drainage system
9.103	Cleaning fluid 500 cc
9.137	Lubricant for fitting adapter ring

## TOOLS

REFERENCE	DESCRIPTION
9.105	Hole cutter Ø65 mm for boss connectors Ø 50 mm with mandrel
9.106	Hole cutter Ø40 mm for boss connectors Ø 32 mm with mandrel
9.109	Hole cutter Ø50 mm for boss connectors Ø40 mm with mandrel
9.113	Hole cutter Ø33.5 mm for large six-mouthed swivel bottle traps (without drill bit)
9.114	90° Toggle bolt
9.115	Toggle bolt
9.115.135	135° Toggle bolt

## METAL JOINTING SLEEVES

REFERENCE	DESCRIPTION
245.032	Metal sleeve Ø32
245.040	Metal sleeve Ø40
245.050	Metal sleeve Ø50

## ROSETTES

REFERENCE	DESCRIPTION
9.181.001	White rosette Ø 32 mm
9.182.001	White rosette Ø40 mm
9.183.001	White rosette Ø 50 mm

## CHAINS FOR WASTE OUTLETS

REFERENCE	DESCRIPTION
9.158	Chain for washbasins and bidets
9.159	Chains for baths and hip-bath

## BARS

REFERENCE	DESCRIPTION
80.081.000	Threaded bar for pipe clip (Ref. 642 y 643...) M-8x1000mm. With zinc

## GRILLES

REFERENCE	DESCRIPTION
346.125.017	Stainless steel grill. Ø70 for references 313.040.092 y 313.050.092.
346.150.017	Stainless steel grill. Ø83 for references 313.040.001 y 313.040.092.001.
347.050.014	Brass Grille Ø70 for references 311.050, 312.050, 314.040.092 y 314.050.092.
347.040.024	Brass Grille Ø70 for references 310.040, 311.032, 311.040, 318.040.125, 372.032.114, 372.040.114, 372.032.001.114, 372.040.001.114 y 382.040.065.
383.040.050.005	Grid support flange reference 383.040.050
383.040.050.006	ABS grille for references 383.040.050.
9.219.110.001	stainless steel sink grid for references 408.110
9.801.001	Sump aluminum grill level garages, etc ... references 870.110, 870.125, 870.160, 870.200 y 872.110.



## The SDP Terrain System

The **TERRAIN SDP** system has the largest number of parts to meet the needs of a wide range of drainage projects. The **TERRAIN SDP** system is based on well-designed and exclusive joining and assembly methods.

## PROPERTIES OF PVC-U PIPES

PVC-U (polyvinylchloride) pipes offer particular advantages compared with those manufactured from traditional materials. In general they have the following characteristics detailed below.

They are: **Inert, odorless, tasteless, corrosion-proof, non-toxic and unaffected** by the action of hostile soils, including soils with a high chalk content or areas subject to the seepage of dangerous substances.

- **Insoluble and lightweight**, considerably lighter than aluminum, facilitating transport and assembly.
- **Resistant to the majority of chemical agents**, such as alkalis, oils, detergents, etc., Nevertheless in applications designed for the transport of these agents, check their behavior in the "Resistance to chemical agents" table.
- **Low friction factor**: The pipe walls may be considered hydraulically smooth and offer minimal resistance to the flow of liquids, resulting in much lower frictional losses than in the case of traditional pipes.
- **Do not conduct electricity**: They are unaffected by underground currents.
- **Prevent build up of scale**, thus keeping their profile constant as long as slopes are applied appropriately.
- **Low elastic modulus values**, achieving low celerity rates, thus reducing the excess pressures caused by the water hammer effect, in comparison with the other materials.

- **High dilatation constants**. As with other plastic materials, PVC-U has a high thermal elevation coefficient, thus it is necessary for movements produced by variations in temperature to be neutralized by using the expansion joints included in the system of parts when and where appropriate, such as at fixing points or brackets.

- **Long-Lasting**: Lifetime of over 50 years, with a residual safety coefficient on reaching this age.  
Falta Range of Applications.

## OPERATING CONDITIONS

TERRAIN SDP pipes conform to the corresponding UNE standards and are designed for use under the following conditions:

- **PVC-U pressurised pipes.**

Work pressures correspond to the nominal pressure marked on the pipe to a temperature 20 ° -25 ° C, according to UNE EN 1452.

- **PVC-U soil and waste pipes.**

Application R according to UNE-EN 12200-1 for rainwater drainage and ventilation. Application B according to BS EN 1329-1 standards for the disposal of waste water and hot domestic use from washing machines, dishwashers, etc., In which, even when the temperature can be high, the volume of water to evacuate is small and therefore the time that the pipe is subject to these conditions is short, without producing a softening of it. It should not be used in installations whose drain is of long duration at elevated temperatures, for example in industrial laundries.

- **PVC-U piping for underground horizontal drainage.**

These installations, supports a maximum working pressure of two ATMs., Although this line will be oversized in thickness to withstand the external loads that weigh on them. The wall thickness corresponds to a PVC-U pressure pipe 5 ATMs., Manufactured to BS EN 1401-1 standards.



## TYPES OF CONNECTION

The TERRAIN SDP system is designed for use with either of the following systems, i.e., flexible seals or soldered joints. This makes robust and stable installations possible with a minimum use of parts. This system is also more economical on account of the speed with which they can be fitted and subsequent labor savings. This can be improved yet further in large residential blocks with the use of our pre-assembly techniques applied in our workshops or on site.

## PIPE MARKING

The pipes are marked in accordance with the corresponding UNE standards, specifying:

- Trade Mark: **SDP**.
- Nominal dimensions: **Diameter and thickness**.
- For pressure pipes: **Nominal pressure**.
- For waste pipes: **Series B and R**.
- Applicable UNE standard.
- Material: **PVC-U**.
- Month, Year and Line of fabrication.

## PRESENTATION AND SUPPLY

PVC-U pipes are supplied in the following lengths:

**Pressure pipes:** 5,80 m.

**Waste, rainwater and ventilation pipes :** 3,00 – 5,00 – 5,80 m.

## ORDERING

Please state the catalogue reference number (part number) in the order, as well as the quantity.

## DIMENSION AND WEIGHT

Unless otherwise indicated in part drawings, their main dimensions will be specified in millimeters and grams.

## ASSEMBLY INSTRUCTIONS

In order for an installation to meet its design requirements it is necessary to follow the assembly instructions given in “**NUEVA TERRAIN** assembly instructions”.

## COLORS

The colors in which each component are available are shown with each one. Drain pipes and their accessories are normally supplied in grey. Some other accessories are also available in white. PVC-U drain pipes and accessories are usually supplied in white polypropylene.

## READY-MADE UNITS

Prices for prefabricated units will be quoted by request to your local representative or directly to NUEVA TERRAIN.

## STORAGE AND HANDLING

All pipes and accessories are manufactured to high standards of finish, permitting their installation without further painting or covering. Under no circumstances should unprotected packages of pipes be left in the open air or in unventilated spaces. Exposure to sunlight can cause a rise in temperature of unprotected material, which in extreme cases may result in deformations. Pipes should be stored in a covered place, on a flat surface on uniformly supported shelving.

## SPECIALISED APPLICATIONS

The TERRAIN SDP system is the most appropriate waste and drainage system of any kind of dwelling of one or more storeys. For other kinds of industrial uses or chemical plants in which the waste is especially aggressive or contaminating, the technical department of NUEVA TERRAIN should be consulted.

N° 001/00234562 N°001/003002 N° 002/004004  
N° 001/00234563 N°001/003003 N° 002/004005  
N° 001/00234564 N°001/003004 N° 002/004006  
N° 001/00234565 N°001/003005 N° 002/004007  
N° 001/00234566 N°001/003006 N° 002/004008  
N° 001/00234567 N°001/003007 N° 002/004009  
N° 001/00234568 N°001/003008 N° 002/004010  
N° 001/00234569 N°001/003009 N° 002/004011  
N° 001/00234570 N°001/003010 N° 002/004012  
N° 001/00234571 N°001/003011 N° 002/004013  
N° 001/00234572 N°001/003012 N° 002/004014  
N° 001/00234573 N°001/003013 N° 002/004015  
N° 001/00234574 N°001/003014 N° 002/004016  
N° 001/00234575 N°001/003015 N° 002/004017



234576 N°001/003016 N° 002/004018  
234577 N°001/003017 N° 002/004019  
234578 N°001/003018 N° 002/004020  
234579 N°001/003019 N° 002/004021  
234580 N°001/003020 N° 002/004022  
234581 N°001/003021 N° 002/004023  
234582 N°001/003022 N° 002/004024  
234583 N°001/003023 N° 002/004025  
234584 N°001/003024 N° 002/004026  
234585 N°001/003025 N° 002/004027  
234586 N°001/003026 N° 002/004028  
234587 N°001/003027 N° 002/004029

## Certificates

N° 001/00234588 N°001/003028 N° 002/004030  
N° 001/00234589 N°001/003029 N° 002/004031  
N° 001/00234590 N°001/003030 N° 002/004032  
N° 001/00234591 N°001/003031 N° 002/004033





**AENOR** Asociación Española de  
Normalización y Certificación

**CERTIFICADO AENOR DE PRODUCTO N° 001 / 002299**  
AENOR PRODUCT CERTIFICATE N°

La Asociación Española de Normalización y Certificación (AENOR) certifica que el producto  
The Spanish Association for Standardisation and Certification (AENOR) certifies that the product

**TUBOS DE POLI (CLORURO DE VINILO) NO PLASTIFICADO, PARA LA  
EVACUACIÓN DE AGUAS RESIDUALES (A BAJA Y A ALTA TEMPERATURA) EN EL  
INTERIOR DE LA ESTRUCTURA DE LOS EDIFICIOS**

**UNPLASTICIZED POLY(VINYL CHLORIDE) (PVC-U) PIPES FOR SOIL AND WASTE DISCHARGE  
(LOW AND HIGH TEMPERATURE) WITHIN THE BUILDING STRUCTURE**

**MARCA COMERCIAL: TERRAIN SDP**  
**TRADEMARK:**

**SERIE DIÁMETROS (mm)**  
**SERIE DIAMETERS (mm)**  
B 32 - 40 - 50 - 110 - 125 - 160 - 200 - 250 - 315

suministrado por

supplied by

**NUEVA TERRAIN, S.L.**  
**CL. PADULETA, 2**  
**01195 VITORIA (Alava - España)**

y elaborado en

and manufactured in

**PI LA VEGA, PARCELA, 8**  
**47100 TORDESILLAS (Valladolid - España)**

es conforme con

complies with

**UNE-EN 1329-1:1999 (EN 1329-1:1999)**  
**UNE-EN 1329-1:2001 ERRATUM**

Para consultar este Certificado, AENOR ha ensayado el producto y ha comprobado el sistema de la calidad aplicado para su elaboración. AENOR realiza estas actividades periódicamente mientras el Certificado no haya sido anulado, según se establece en el Reglamento Particular RP 01.53.

In order to grant this Certificate, AENOR has tested the product and has verified the quality system used in its manufacture. AENOR performs these tasks periodically while the Certificate has not been cancelled, in accordance with the regulations of the Specific Rules RP 01.53.

Fecha de concesión: **2002-09-17**  
First issued on

Fecha de renovación: **2011-02-01**  
Renewed on

Fecha de caducidad: **2016-02-01**  
Expires on

**El Director General de AENOR**  
General Manager

No está autorizada la reproducción parcial de este documento.

The partial reproduction of this document is not permitted.

AENOR - Girona, 6 - 28004 MADRID - Teléfono: 913 12 40 00 - Telefax: 913 10 46 93

**Entidad acreditada por ENAC (C-PR002.01)**  
Body accredited by ENAC (C-PR002.01)



**AENOR** Asociación Española de  
Normalización y Certificación

**CERTIFICADO AENOR DE PRODUCTO N° 001 / 003389**  
AENOR PRODUCT CERTIFICATE N°

Pg. 1/2  
2009-03-04

La Asociación Española de Normalización y Certificación (AENOR) certifica que el producto  
The Spanish Association for Standardisation and Certification (AENOR) certifies that the product

**ACCESORIOS INYECTADOS DE PVC NO PLASTIFICADO UTILIZADOS PARA  
EVACUACIÓN DE AGUAS RESIDUALES (A BAJA Y A ALTA TEMPERATURA) EN EL  
INTERIOR DE LA ESTRUCTURA DE LOS EDIFICIOS**

**UNPLASTICIZED POLY (VINYL CHLORIDE) (PVC-U) FITTINGS FOR SOIL AND WASTE DISCHARGE  
(LOW AND HIGH TEMPERATURE) WITHIN THE BUILDING STRUCTURE**

detallado en la(s) página(s) siguiente(s),

detailed in the following page(s).

suministrado por

supplied by

**NUEVA TERRAIN, S.L.**  
**CL. PADULETA, 2**  
**01195 VITORIA (Alava - ESPAÑA)**

y elaborado en

and manufactured in

**PI LA VEGA, PARCELA, 8**  
**47100 TORDESILLAS (Valladolid - ESPAÑA)**

es conforme con

complies with

**UNE-EN 1329-1:1999 (EN 1329-1:1999)**

Para consultar este Certificado, AENOR ha ensayado el producto y ha comprobado el sistema de la calidad aplicado para su elaboración. AENOR realiza estas actividades periódicamente mientras el Certificado no haya sido anulado, según se establece en el Reglamento Particular RP 01.53.

In order to grant this Certificate, AENOR has tested the product and has verified the quality system used in its manufacture. AENOR performs these tasks periodically while the Certificate has not been cancelled, in accordance with the regulations of the Specific Rules RP 01.53.

Fecha de concesión: **2005-04-20**  
First issued on

Fecha de renovación: **2009-03-04**  
Renewed on

Fecha de caducidad: **2014-03-04**  
Expires on

**El Director General de AENOR**  
General Manager

No está autorizada la reproducción parcial de este documento.

The partial reproduction of this document is not permitted.

AENOR - Girona, 6 - 28004 MADRID - Teléfono: 913 12 40 00 - Telefax: 913 10 46 93

**Entidad acreditada por ENAC con n° C-PR002.01**  
Body accredited by ENAC (number C-PR002.01)



**AENOR** Asociación Española de  
Normalización y Certificación

**CERTIFICADO AENOR DE PRODUCTO N° 001 / 003389**  
AENOR PRODUCT CERTIFICATE N°

Pg. 2/2  
2009-03-04

**MARCA COMERCIAL: SDP**  
**TRADEMARK:**

REFERENCIA	FIGURA	DIÁMETRO (mm)	ÁNGULO	ÁREA DE APLICACIÓN	TIPO DE UNIÓN
REFERENCE	FIGURE	DIAMETER (mm)	ANGLE	APPLICATION AREA	JOIN SYSTEM
107.110.136	Codo Hembra-Hembra	110	135°	Ø	Unión por encochado
104.110.136	Derivación simple Hembra-Hembra-Hembra	110	135°	Ø	Unión por encochado
106.110.136	Derivación doble Hembra-Hembra-Hembra	110	135°	Ø	Unión por encochado
107.110.108	Codo Hembra-Macho	110	108°	Ø	Unión por encochado
110.110	Manguito Hembra-Hembra	110	135°	Ø	Unión por encochado
128.110.50.40	Reductor triple Macho-Hembra-Hembra	110.50.40	Ø	Ø	Unión por encochado
201.32.135	Codo Hembra-Hembra	32	135°	Ø	Unión por encochado
201.32.92	Codo Hembra-Hembra	32	92°	Ø	Unión por encochado
201.40.125	Codo Hembra-Hembra	40	125°	Ø	Unión por encochado
201.40.92	Codo Hembra-Hembra	40	92°	Ø	Unión por encochado
201.50.135	Codo Hembra-Hembra	50	135°	Ø	Unión por encochado
201.50.92	Codo Hembra-Hembra	50	92°	Ø	Unión por encochado
204.32.135	Derivación simple Hembra-Hembra-Hembra	32	135°	Ø	Unión por encochado
204.40.135	Derivación simple Hembra-Hembra-Hembra	40	135°	Ø	Unión por encochado
204.40.92	Derivación simple Hembra-Hembra-Hembra	40	92°	Ø	Unión por encochado
204.50.135	Derivación simple Hembra-Hembra-Hembra	50	135°	Ø	Unión por encochado
204.50.92	Derivación simple Hembra-Hembra-Hembra	50	92°	Ø	Unión por encochado
206.40.135	Derivación doble Hembra-Hembra-Hembra	40	135°	Ø	Unión por encochado
206.50.135	Derivación doble Hembra-Hembra-Hembra	50	135°	Ø	Unión por encochado
206.50.92	Derivación doble Hembra-Hembra-Hembra	50	92°	Ø	Unión por encochado
210.32	Manguito unión Hembra-Hembra	32	Ø	Ø	Unión por encochado
210.40	Manguito unión Hembra-Hembra	40	Ø	Ø	Unión por encochado
210.50	Manguito unión Hembra-Hembra	50	Ø	Ø	Unión por encochado
224.40.32	Reductor Macho-Hembra	40-32	Ø	Ø	Unión por encochado
224.50.32	Reductor Macho-Hembra	50-32	Ø	Ø	Unión por encochado
224.50.40	Reductor Macho-Hembra	50-40	Ø	Ø	Unión por encochado

**El Director General de AENOR**  
General Manager

No está autorizada la reproducción parcial de este documento.

The partial reproduction of this document is not permitted.

AENOR - Girona, 6 - 28004 MADRID - Teléfono: 913 12 40 00 - Telefax: 913 10 46 93

**Entidad acreditada por ENAC con n° C-PR002.01**  
Body accredited by ENAC (number C-PR002.01)



La Asociación Española de Normalización y Certificación (AENOR) certifica que el producto  
The Spanish Association for Standardisation and Certification (AENOR) certifies that the product

**ACCESORIOS INYECTADOS DE PVC NO PLASTIFICADO UTILIZADOS PARA  
EVACUACIÓN DE AGUAS RESIDUALES (A BAJA Y A ALTA TEMPERATURA) EN EL  
INTERIOR DE LA ESTRUCTURA DE LOS EDIFICIOS**

**UNPLASTICIZED POLY (VINYL CHLORIDE) (PVC-U) FITTINGS FOR SOIL AND WASTE DISCHARGE  
(LOW AND HIGH TEMPERATURE) WITHIN THE BUILDING STRUCTURE**

detallado en la(s) página(s) siguiente(s), detailed in the following page(s),  
suministrado por supplied by

**NUEVA TERRAIN, S.L.**  
CL PADULETA, 2  
01195 VITORIA (Alava - ESPAÑA)

y elaborado en and manufactured in

**PI EL SEQUERO, AV DEL RÍO EBRO, S/N**  
26509 LOGROÑO (La Rioja - ESPAÑA)

es conforme con complies with

**UNE-EN 1329-1:1999 (EN 1329-1:1999)**

Para conceder este Certificado, AENOR ha ensayado el producto y ha  
comprobado el sistema de la calidad aplicado para su elaboración. AENOR  
realiza estas actividades periódicamente mientras el  
Certificado no haya sido anulado, según se establece en el  
Reglamento Particular RP 01.31.

In order to grant this Certificate, AENOR has tested the product and  
has verified the quality system used in its manufacture. AENOR  
performs these tasks periodically while the Certificate has not been  
cancelled, in accordance with the stipulations of the Specific Rules  
RP 01.31.

Fecha de concesión: **2007-03-29**  
First issued on:

Fecha de renovación: **2010-04-20**  
Renewed on:

Fecha de caducidad: **2015-04-20**  
Expires on:

**El Director General de AENOR**  
General Manager

No está autorizada la reproducción parcial de este documento.

The partial reproduction of this document is not permitted.

AENOR - Génova, 6 - 28004 MADRID - Teléfono: 914 32 60 00 - Telefax: 913 10 46 83

**Entidad acreditada por ENAC (C-PR002.01)**  
Body accredited by ENAC (C-PR002.01)



MARCA COMERCIAL: **SOP**  
TRADEMARK:

REFERENCIA	FIGURA	DIÁMETRO (mm)	ÁNGULO	ÁREA DE APLICACIÓN	TIPO DE UNIÓN
REFERENCE	FIGURE	DIAMETER (mm)	ANGLE	APPLICATION AREA	JOINT SYSTEM
101.110.135	Codo Hembra-Hembra	110	135°	B	Unión por encolado
104.110.135	Derivación simple Hembra-Hembra-Hembra	110	135°	B	Unión por encolado
107.110.158	Codo Macho-Hembra	110	158°	B	Unión por encolado
110.110	Manguito Hembra	110		B	Unión por encolado
201.32.92	Codo Hembra-Hembra	32	92°	B	Unión por encolado
201.40.92	Codo Hembra-Hembra	40	92°	B	Unión por encolado
201.50.135	Codo Hembra-Hembra	50	135°	B	Unión por encolado
201.50.92	Codo Hembra-Hembra	50	92°	B	Unión por encolado
204.50.135	Derivación simple Hembra-Hembra-Hembra	50	135°	B	Unión por encolado



No está autorizada la reproducción parcial de este documento.

The partial reproduction of this document is not permitted.

AENOR - Génova, 6 - 28004 MADRID - Teléfono: 914 32 60 00 - Telefax: 913 10 46 83

**Entidad acreditada por ENAC (C-PR002.01)**  
Body accredited by ENAC (C-PR002.01)



## **GUARANTEE**

Our guarantee solely and exclusively covers the replacement of the defective material or part once the client has carried out the tests required by the regulations and the defect has been reviewed and accepted by our technical department. Any incorrect handling or use other than that for the purpose for which it was designed automatically voids the guarantee.

## **DISCLAIMER**

We reserve the right to make any type of modification to the design and dimensions in our products without prior notice.

## **JURISDICTION**

To resolve disputes which may arise from the application of these standards, NUEVA TERRAIN, S.L. and the customer agree to be bound to the courts and tribunals of Vitoria, renouncing all other applicable codes of law.

- This catalogue is subject to modifications without prior notice and has no contractual value. The data provided is given in good faith. We are not responsible for the consequence of any use made of this data.

- TERRAIN SDP and SDP are registered brands of NUEVA TERRAIN S.L.
- NUEVA TERRAIN. We reserve the right to change the characteristics of our parts and accessories without prior notice.
- Total or partial publication of this catalogue is prohibited without the prior written consent of NUEVA TERRAIN.





26/3000/SEP 2014/SCG



**NUEVA TERRAIN S.L.**

Pol. Ind. Jundiz  
C/ Paduleta nº 2  
01015 VITORIA - ÁLAVA (ESPAÑA)  
Tel. 945 14 11 88 - Fax 945 14 33 36  
E-mail: [nuevaterrain@nuevaterrain.com](mailto:nuevaterrain@nuevaterrain.com)  
<http://www.nuevaterrain.com>