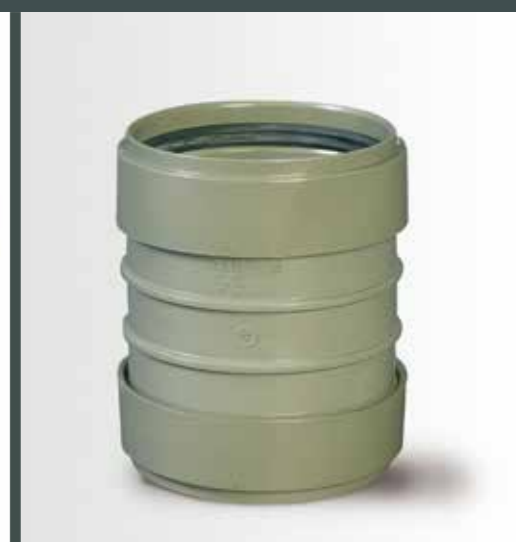




38/1000/SEP 2014/SCG



# TERRAIN SDP



**NUEVA TERRAIN S.L.**

Pol. Ind. Jundiz  
C/ Paduleta nº 2  
01015 VITORIA - ÁLAVA (ESPAÑA)  
Tel. 945 14 11 88 - Fax 945 14 33 36  
E-mail: [nuevaterrain@nuevaterrain.com](mailto:nuevaterrain@nuevaterrain.com)  
<http://www.nuevaterrain.com>

**PVC-U DRAINPIPES, PARTS  
AND COMPONENTS**

**Soundproof System**

# Soundproof System



Excellent system to absorb and decrease all noises derived from the drainage installation within the building.

The system is certified with excellent results, accordingly to EN 1466 certification, at Fraunhofer Institute in Stuttgart.

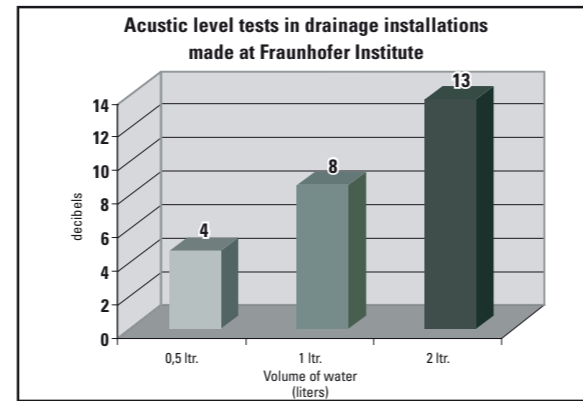
It resists high temperatures in discontinuous use.

It resists a degree of impact (**all fittings from the system are High Impact Resistance**)

In our system, pipes are male and fittings female trying to reduce at maximum sockets needed which make the installation expensive.

Complete system from 50 to 160 mm

We give solution to all types of installations, secondary ventilation, access door, ventilation valve, etc... making it compatible with our PVC-U soundproof system.



The test has been made according to different drainage water levels (0.5, 1 and 2 liters per second), being these ones considered as the most common levels within the installation. These data correspond to the acoustic pressure measurements, in decibels, originated by the mentioned water levels at the reception room, **basement floor after the wall** with a resistance of 220 kg/m<sup>2</sup> according to EN-14366:2005-02.

## INSTALLATION

In order to obtain 100% of efficiency in noise reduction, Nueva Terrain recommends bearing in mind the following points:

- 1.- All changes in the direction of the installation should be made in 45°.
- 2.- All **passby** from the WC to the main line is done at 45°.
- 3.- All joints are made with rubber ring.
- 4.- All clips used in the installation must be isofonique (with rubber ring).



## REACTION TO FIRE

Nueva Terrain SDP Soundproof Sewerage systems have also been developed in compliance with article 11 of the Building Code, on Basic Safety Requirements in the case of fire", pursuant to the following premises:

1. That it is important to ascertain whether or not a material will contribute directly to the spread of a fire.
2. That the results of non-combustibility tests provide the information required, that they allow decision-makers to determine if the material in question is suitable for use in the building.
3. That consumers are entitled to be protected from risks that affect their safety.



Classes for reaction to fire	B	C	D	E	F
	Low speed of fire spread and heat emission	Medium speed of fire spread and heat emission	High speed of fire spread and heat emission	Very high speed of fire spread and heat emission	Without determined characteristic
SMOKE opacity classification (S)	S <sub>1</sub> Low quantity and speed of emission		S <sub>2</sub> Average quantity and speed of emission	S <sub>3</sub> High quantity or speed of emission	
Molten drip or flaming particle classification (d)	d <sub>0</sub> No flaming drips are produced		d <sub>1</sub> There are no molten drip particles with duration in excess of 10 seconds	d <sub>2</sub> High molten drip or particle classification	

Based on the above premises, the final results of the fire resistance tests performed on our sewerage systems conducted at the AFITI-Licof laboratory in accordance with EN 13501-1:2002, are:

- **PVC-U Terrain SDP sewerage system (grey-green colour): B-S<sub>1</sub>,d<sub>0</sub>**

## Piping

Manufactured in accordance with UNE-EN 1329-1:2001 standard, capable of withstanding intermittent discharges of water at 95° (test file No. 12656 of the Eduardo Torroja institute)

### APPLICATION B - PVC-U SEWAGE PIPE

REFERENCE	Ø	REFERENCE	Ø
100.083.058	(2) 83	100.110.030	110
100.110.030	110	100.110.058	110
200.040.030	40	100.125.030	125
200.040.058	40	100.125.058	125
200.040.058.010	(1) 40	100.160.030	160
200.050.030	50	100.160.058	160
200.050.058	50	100.200.058	*(3) 200
100.083.030	(2) 83	100.250.058	*(3) 250

### M-F ELBOW

REFERENCE	Ø
207.040.135 + 209.040	40
207.050.135 + 209.050	50
107.110.135 + 109.110	110

### DOUBLE BRANCH

REFERENCE	Ø
206.040.135 + (4)209.040	40
206.050.135 + (4)209.050	50
106.110.135 + (4)109.110	110
1.106.125.135	125
106.160.110.135 + (2)109.110 + (2)109.160	160x110

### BOSS CONNECTOR COUPLER

REFERENCE	Ø
116.110.050.040 + (2)109.110 + 209.050 + (3)209.040	110x50x40

### STRAIGHT COUPLER

REFERENCE	Ø
210.040 + (2)209.040	40
210.050 + (2)209.050	50
110.110 + (2)109.110	110
1.110.125	125
110.160 + (2)109.160	160
1.811.200	200
6.110.250	250

### SLIP COUPLER

REFERENCE	Ø
211.040	40
211.050	50
1.111.110	110
1.111.125	125
111.160	160
1.816.200	200

### ADAPTING RINGS

REFERENCE	Ø
209.40	40
209.50	50
109.110	110
109.160	160

### ISOPHONIC CLAMP

FOR THREADED ROD M-8 PVC-U SEWAGE PIPE

REFERENCE	Ø
643.050.008	50
643.110.008	110
643.115.008	115
643.125.008	125
643.160.008	160

## PVC-U Components for drains

### F-F ELBOW

REFERENCE	Ø
201.040.135 + (2)209.040	40
201.050.135 + (2)209.050	50
101.110.135 + (2)109.110	110
1.101.125.135	125
101.160.135 + (2)109.160	160
6.101.200.135	200
6.101.250.135	250

### SINGLE BRANCH

REFERENCE	Ø
204.040.135 + (3)209.040	40
204.050.135 + (3)209.050	50
104.110.135 + (3)109.110	110
1.104.125.135	125
104.160.110.135 + (2)109.160 + 109x110	160x110
104.160.135 + (3)109.110	160
6.104.200.110.135 + 109.110	200x110
6.104.200.125.135	200x125
6.104.200.135	200

### CROSS-VENTILATION CONNECTOR

REFERENCE	Ø
108.110.050 + 109.110 + 209.050	110x50

### REDUCERS

REFERENCE	Ø
124.110.050 (b)	110x50
124.125.110 (b)	125x110
124.160.110 (b)	160x110
124.160.125 (b)	160x125
124.200.110 + 109.110 (a)	200x110
1.124.200.125 (a)	200x125
124.200.160 + 109.160 (a)	200x160
123.200.110 (c)	200x110
123.200.160 (c)	200x160

### STRAIGHT COUPLER

REFERENCE	Ø
210.040 + (2)209.040	40
210.050 + (2)209.050	50
110.110 + (2)109.110	110
1.110.125	125
110.160 + (2)109.160	160
1.811.200	200
6.110.250	250

### SLIP COUPLER

REFERENCE	Ø
211.040	40
211.050	50
1.111.110	110
1.111.125	125
111.160	160
1.816.200	200

### 45° BOSS CONNECTOR

REFERENCE	Ø
112.110.040.135	40
112.110.050.135	50

### ADAPTING RINGS

REFERENCE	Ø
209.40	40
209.50	50
109.110	110
109.160	160

### ISOPHONIC CLAMP

FOR THREADED ROD M-8 PVC-U SEWAGE PIPE

REFERENCE	Ø
643.050.008	50
643.110.008	110
643.115.008	115
643.125.008	125
643.160.008	160

### FIREWALL COLLAR

REFERENCE	Ø
670.40	40
670.55	55
670.110	110
670.125	125
670.160	160
670.200	200